

The Big Lake Ranch





ranchline



A magnificent natural wonder

Huge, panoramic views extending across an endless horizon, wide-open skies so blue they almost appear to be painted, and spectacular mountain ranges that seem almost close enough to touch are part of the natural wonders that make up the Big Lake Ranch, located in the desert plains of Southeastern New Mexico. Consisting of approximately 7,700 acres, this fully operational cattle grazing operation is sure to offer ranchers everything they need. The ranch is comprised of 2,405 (MOL) deeded acres and 5,299 acres (MOL) BLM. With four distinct seasons, you'll be able to experience summer, fall, winter and spring under the wide New Mexico sky. This ranch is located just northeast of Roswell, New Mexico, off US Hwy 70. Its magnificent views overlooking the majestic Capitan and Sacramento Mountains are breathtaking all year round.





*A Great American
Adventure story is
written in the hills of
Big Lake Ranch*

The Big Lake Ranch, located just northeast of Roswell, New Mexico, is part of the great American adventure story of “How the West was Won”. During the time in America when pioneers were traveling westward and homesteading on new, unsettled land, two brothers who were blacksmiths came to New Mexico to make their new lives. The Big Lake Ranch started with the Dunahoo brothers, after which the Dunahoo Hills are named.

As part of the territory of Sheriff Pat Garrett, the famous lawman known for his pursuit of the infamous gunfighter Billy the Kid, the Big Lake Ranch saw many of the stories of the west in the making. Stories of Garrett have been passed down through the generations of owners of the Big Lake Ranch.

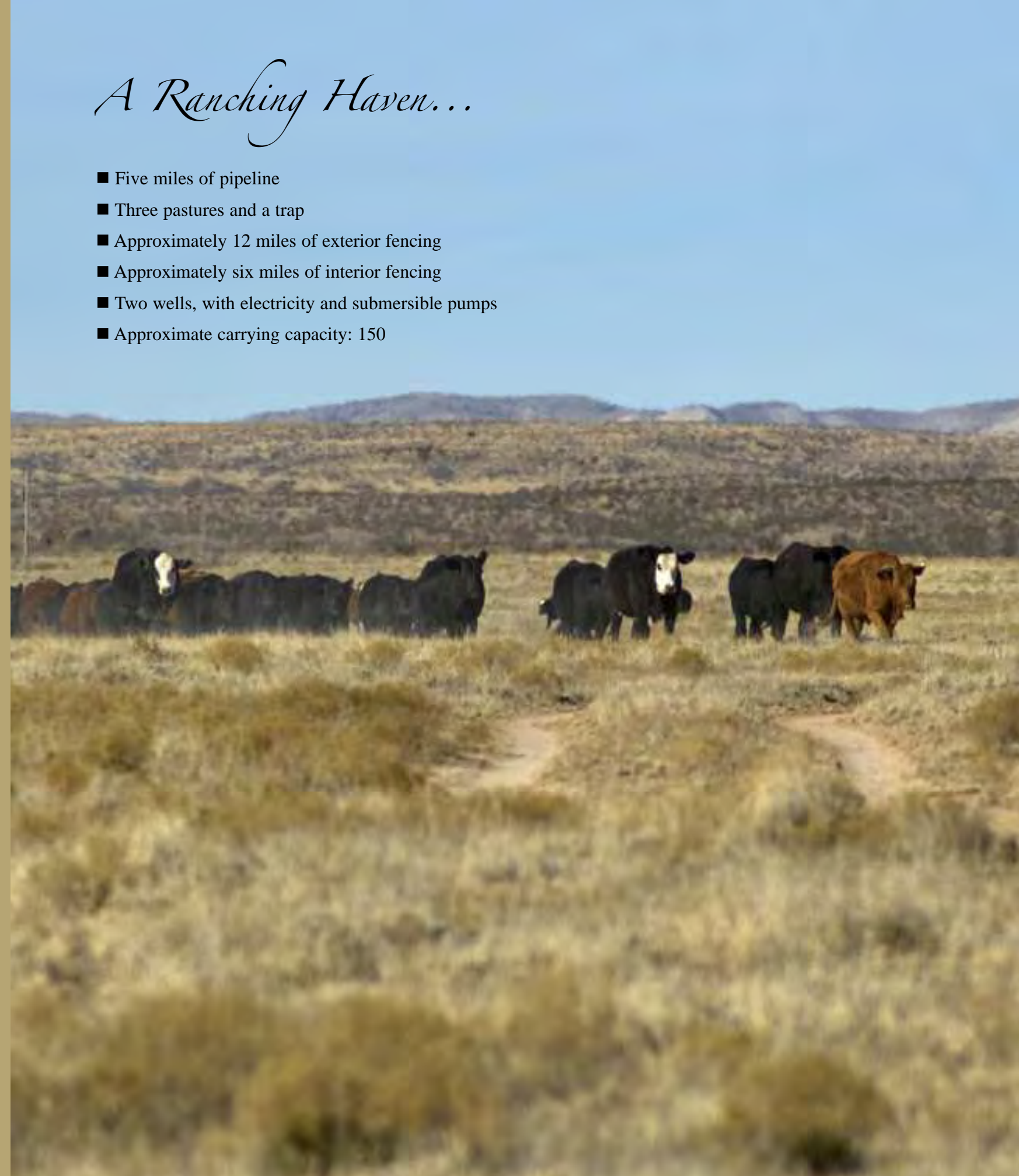
The ranch has been a part of the story of New Mexico families, as well as the most recent owner, who came from Texas in search of wide open spaces good for cattle operations.

The Sierra Blanca Range, pictured here, has the highest point, not only in the Sacramento, but in the entire state except for the Sangre de Cristo Mountains to the north. The huge extrusive volcanic mountain of Sierra Blanca Peak towers 12,003 feet above sea level. The peak and surrounding ridges and summits are the only area in southern New Mexico to rise above timberline into alpine tundra vegetation. This peak is home to Ski Apache, New Mexico's premier ski and snowboard resort. Fifty-five trails, beginning at 11,400 feet, fan out for skiers and snowboarders of all levels. Ski Apache is located just 70 miles from the Big Lake Ranch.



A Ranching Haven...

- Five miles of pipeline
- Three pastures and a trap
- Approximately 12 miles of exterior fencing
- Approximately six miles of interior fencing
- Two wells, with electricity and submersible pumps
- Approximate carrying capacity: 150



New Mexico is famous for its huge sky, and Big Lake Ranch is no exception. With long, wide-open horizons, spectacular skies are a common occurrence.





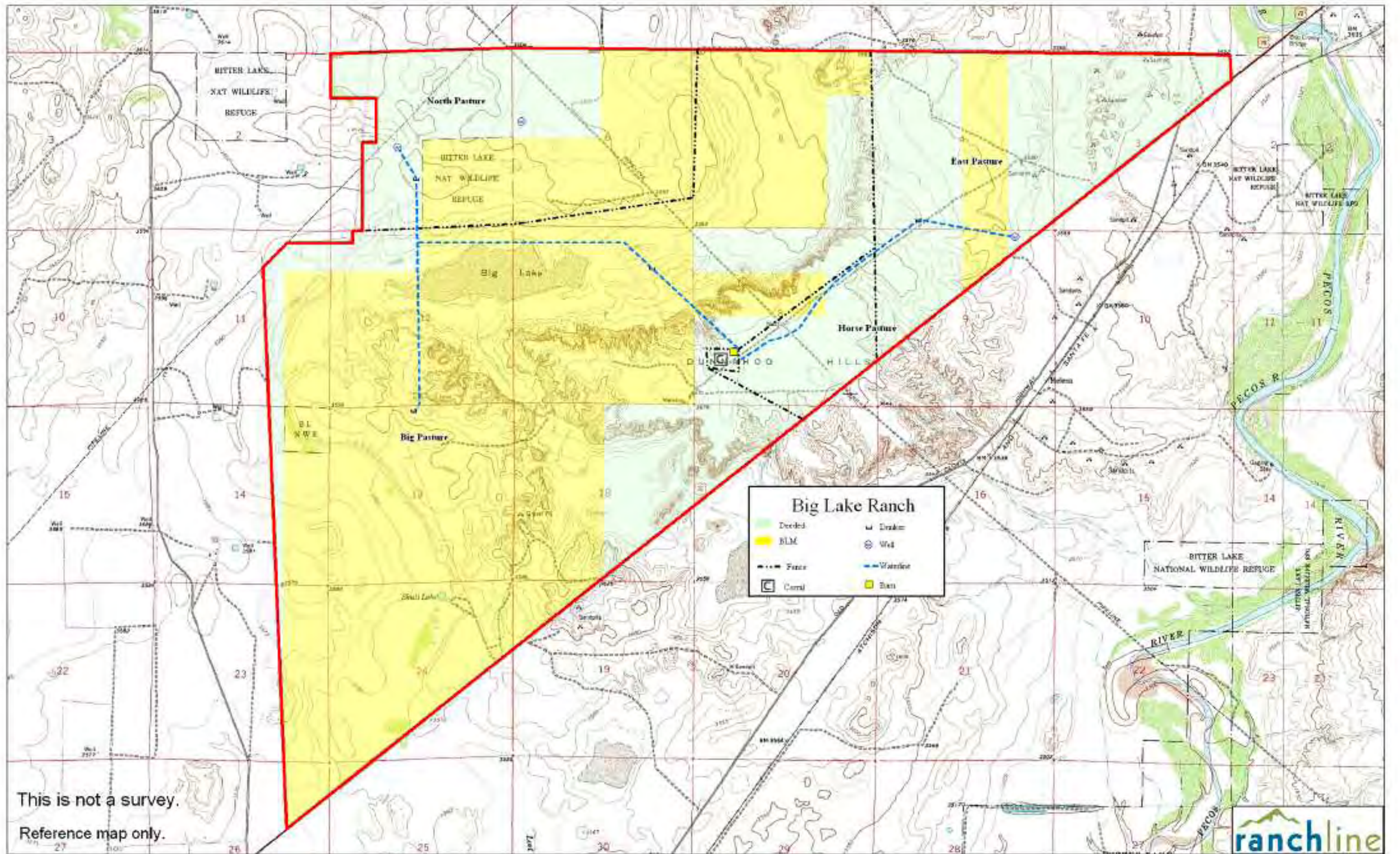


The Big Lake Ranch has a nice set of corrals, a barn, and a loading chute, as well as water storage, tanks and drinkers, five miles of pipeline and well-maintained fencing.



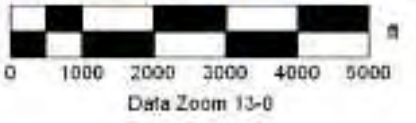
The Big Lake Ranch offers approximately five miles of Highway frontage off US Hwy 70, which connects Roswell with Portales and Clovis to the north, and Ruidoso and Las Cruces to the west and south. This 4-lane highway offers easy access to Interstate 40 to the north, and Interstates 40 and 10 to the south. Roswell sits in the center of an area surrounded by metropolitan areas: Albuquerque, New Mexico, and El Paso, Amarillo, Lubbock and Midland/Odessa, all in Texas.





This is not a survey.
Reference map only.

★
MN (8.5° E)



ranchline

Roswell

The city of Roswell and Chaves County have been important historical sites throughout the history of human habitation in North America. Roswell, situated at the confluence of three rivers – the Spring, the Hondo, and the Pecos – was established in 1870 by Van Smith, although the first historically documented settlement (1867) in the area was a settlement of crude adobe huts at “Rio Hondo,” the present day neighborhood of Chihuahuita. The Roswell and Chaves County area was contained within the original homeland of the Mescalero

Apaches, and overlapped the hunting grounds of the Comanches, and became the campsite on the Goodnight-Loving Trail, which opened in 1866. The trail brought the ranching industry to the area, which flourishes to the present day.

Visitors to the city will find a plethora of cultural activities. For example, museum and art lovers of every age and interest can explore five outstanding museums: the Anderson Museum of Contemporary Art, featuring a wide ranging collection of modern art; the Roswell Museum and Art Center, with its collection of paintings by Peter Hurd, Henriette Wyeth, Georgia O’Keefe, as well as the fabulous Rogers Aston Indian Gallery; the Historical Center for Southwest New Mexico, located in the James Phelps White stately home and filled with antiques, artifacts, and a changing gallery of exhibits; the General Douglas L. McBride Museum, with its military armament displays; and the International UFO Museum, featuring UFO phenomenon exhibits and The Alien Caffeine Espresso Bar.

There’s much more to do in this All-America City. If your cup of tea is stargazing and planet exploration, the Robert H. Goddard Planetarium is an exciting choice. Bird watchers and wildlife aficionados will relish trips to Bitter Lake Wildlife Refuge with its designated fishing and hunting areas and flocks of migratory fowl. The Spring River Park and Zoo boasts animal exhibits, paved bicycle paths, a children’s fishing lake, a carousel, and a miniature train ride. Golfers will enjoy two of the finest courses in Southeast New Mexico: Cahoon Park, an 18-hole golf course open to the public and New Mexico Military Institute’s 18-hole course also open to the public.



A view down Main Street.



Downtown Roswell which houses the famous UFO Museum.



The Chaves County Courthouse.



Wells Fargo Bank Building in downtown Roswell.

Big Lake Ranch

\$1,185,000

Offered exclusively by Ranchline

2,405 deeded acres (MOL); 5,299 BLM acres (MOL)

7,704 total acres (MOL)

Paul Taylor, III

Toll-free 1-866-323-3111 or (505) 420-5585

www.ranchline.com ♦ paul@ranchline.com





Reaching New Heights in Ranch Sales

Ranchline is an experienced team focusing on premier ranch properties across the West. Our proven marketing strategy and excellent service keeps us in high demand. We represent the finest ranch real estate and consult with buyers in their property acquisitions, nationwide.

Sell Your Ranch with Ranchline

Ranchline is leading the way in accelerated and conventional marketing of premier properties. When it's time to put your ranch on the market, nobody gets results better than Ranchline.

*Selling premier
properties across the West...*



www.ranchline.com

Toll-free: 1-866-323-3111

Mobile (505) 420-5585 ♦ Office (505) 622-1490

400 West 2nd, Roswell, NM 88201 ♦ e-mail: paul@ranchline.com ♦ www.ranchline.com