

# *Bonney Canyon Ranch*



  
ranchline

# *Bonney Canyon Ranch*

**N**estled in the rolling hills of the magnificent Hondo Valley, Bonney Canyon Ranch is alive with some of the most beautiful scenery in all of New Mexico. Offering huge, panoramic skies, long canyons that wind endlessly through rugged mountain terrain and breathtaking views of the Capitan and Sacramento mountain peaks, this spectacular property is a haven where one can forget the stress of everyday life and unwind on a real working ranch.

This ranch is located approximately eight miles off US Hwy 70 between Roswell and Ruidoso. Forty miles west is the booming ski village of Ruidoso, and 40 miles east is the eclectic and historic town of Roswell.

Consisting of 8,951 deeded acres and 1,383 BLM acres, this ranch is home to a very healthy and vital population

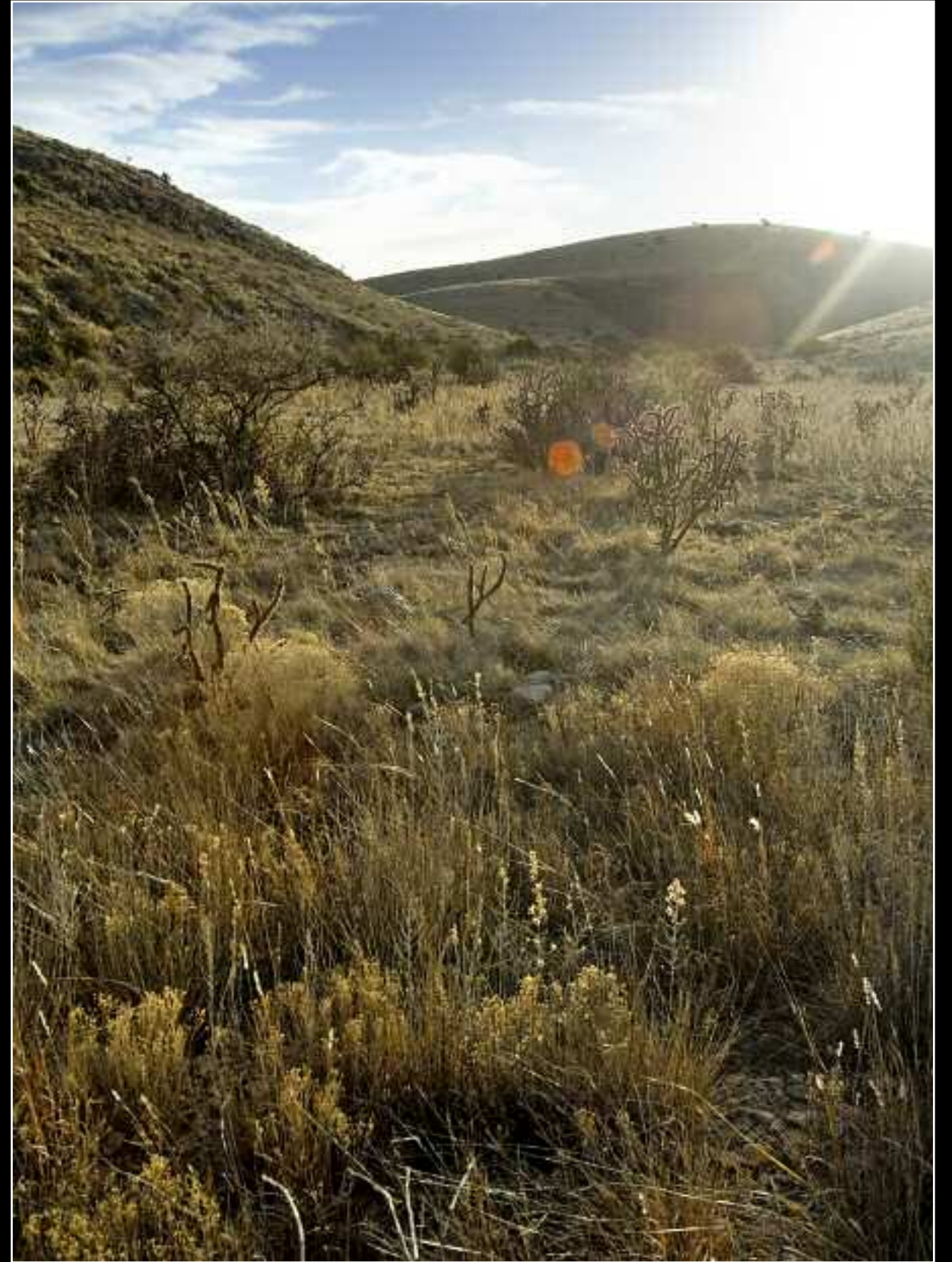
of mule deer and it is not uncommon to see hundreds of deer throughout the course of a day. The ranch is also home to the original game park where Barbary Sheep were introduced to New Mexico in the late 1940s. Today there are numerous resident herds in excess of 200-300 sheep per herd.

For those looking for a place to relax, Bonney Canyon has just the thing. Experience incredible western solitude as the wind whips through the trees and occasional sounds of wildlife filter through the many canyons. Go on a nature hike and explore the majestic Bonney Canyon Ranch. Who knows... you just might find William H. Bonney's (A.K.A. "Billy the Kid") old hideout.















# WILDLIFE

**B**onney Canyon Ranch offers some of the best hunting experiences in New Mexico. The ranch is home to a very healthy and vital population of mule deer and it is not uncommon to see hundreds of deer throughout the course of a day. The ranch is also home to the original game park where Barbary Sheep were introduced to New Mexico in the late 1940s. Today there are numerous resident herds in excess of 200-300 sheep per herd (These images were all taken on or in the vicinity of Bonney Canyon Ranch).





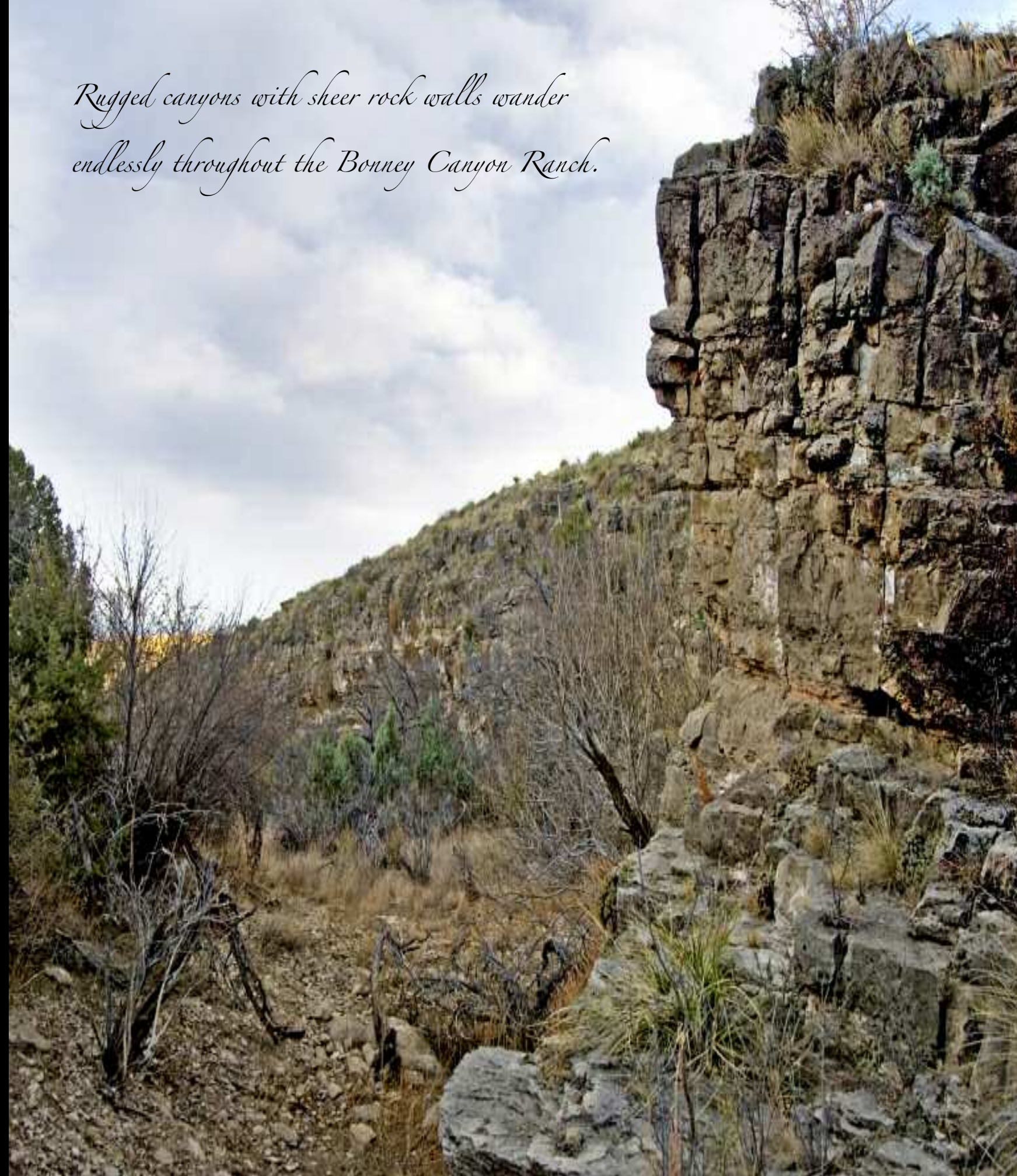
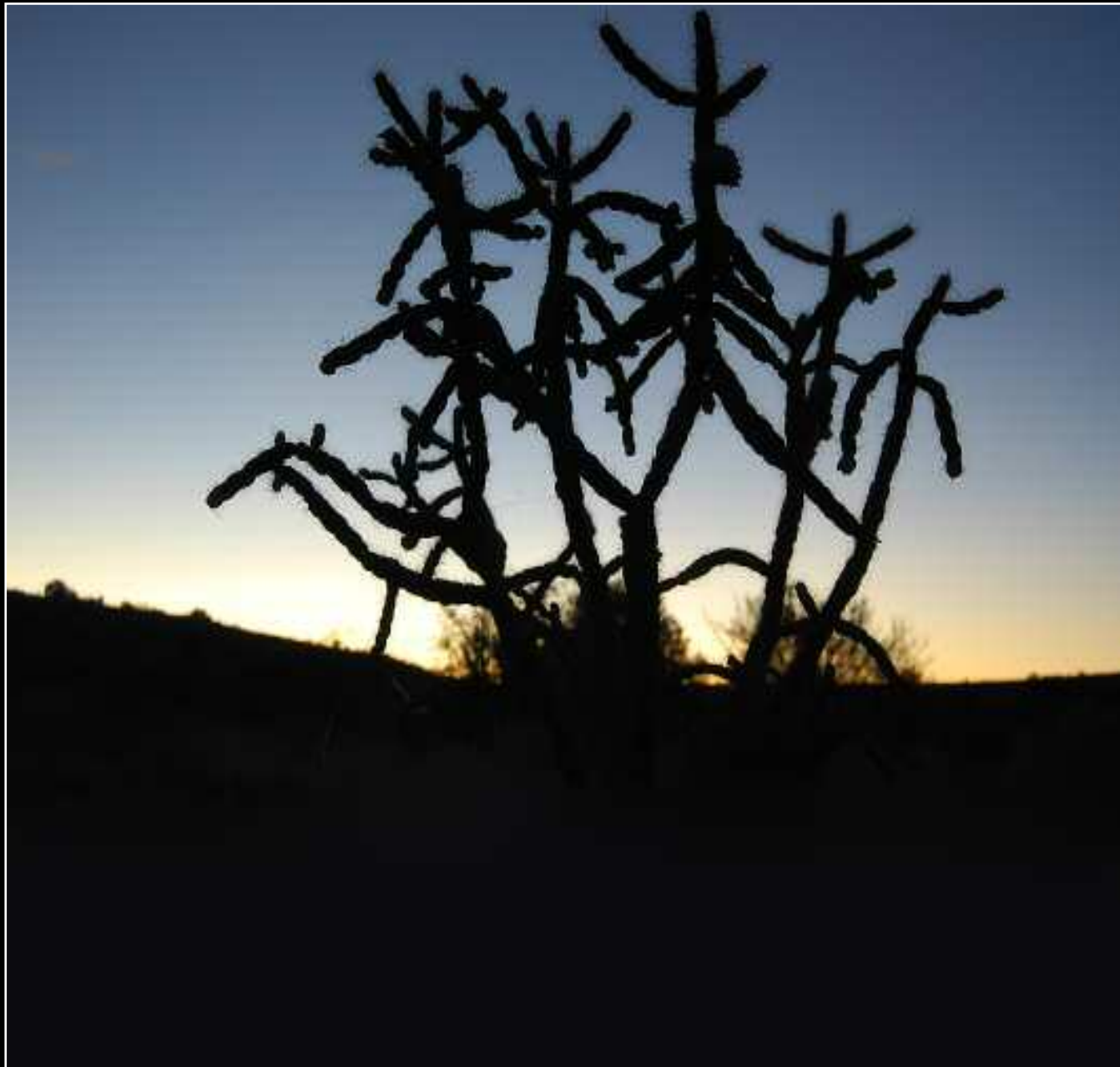
# BARBARY SHEEP

ON THE BONNEY CANYON RANCH





*Rugged canyons with sheer rock walls wander  
endlessly throughout the Bonney Canyon Ranch.*







## *New Mexico's beautiful Hondo Valley*

The beautiful Hondo Valley is made up of five villages: Picacho, Tinnie, Arabela, Hondo and San Patricio aren't even mentioned in a New Mexico cities list or in the Secretary of State's Blue Book that gives vital information about the state. Obviously, their populations are minuscule but they are all located in one of the loveliest valleys of Southeastern New Mexico, the Hondo.

Driving through them on U. S. 70/380 in the spring, the fruit trees, primarily apple and pear, are bursting with blossoms. After the growing season, you will see roadside stands where you can buy vine-ripened fruit. In the fall, the leaves in many shades of yellow delight the eye. It is a scenic drive at any time of the year.

Going west from Roswell, the road begins to climb and curve through open range land dotted with a few ranches. A place with no marker or post office named Sunset is the first town listed on the map. It was the spot where the Chisholm Trail crossed U. S. 380. It is indicated by just a dot.

Next is the village of Picacho, settled in 1867-68 by people from the Rio Grande Valley. They established a settlement on the banks of the Rio Hondo at the foot of Picacho Peak. It was a stage road at one time. Sheep and goats were the settlers' herds of choice, but before long the cattlemen discovered the fertile Hondo Valley. The



Circle Diamond Cattle Company was established but later taken over by the Diamond A Cattle Company. Later it became a part of the Bloom Land and Cattle Company that grew to more than 800,000 acres. It was broken into small tracts

in the 1940s and many people from Roswell became weekend ranchers.

Tinnie's birth was in 1870 and was named Analla for an early settler. Some of the early settlers lived in caves, so the town was also called Las Cuevas. A store and post office was purchased by the Raymond family and again had a name change: "Tinnie" for their daughter.

Robert O. Anderson of Roswell bought the Tinnie Mercantile Company in 1959. He added a porch, a tower and a pavilion to the old building. He opened it as the Silver Dollar Bar and Steak House, a popular eating establishment that is still serving great meals in a lovely atmosphere, although Anderson no longer owns it.

New Mexico road 368 winds north from Tinnie and the pavement ends 17 miles at Arabela. If you have a four-wheel-drive vehicle you can go the additional six miles on a hazardous dirt road to the no-longer-existing town of Pine Lodge. Established in 1870 by three Hispanic families from Walensburg, Colorado, Arabela was first known as Las Tablas, meaning boards or planks. Later the name was changed to Arabela, after a settler's daughter. The panorama of the east end of Capitan Mountain suggests a painted backdrop for a movie. It is a picturesque drive on a road less traveled.

Returning to U. S. Highway 70/380, Hondo is another village that was named something else originally. Because it was at the junction of the Bonito and Ruidoso Rivers, it was first named La Junta. U. S. 70 follows the noisy Rio Ruidoso and U. S. 380 follows the pretty Rio Bonito.

## Nearby Attractions

Thirty miles down the road from Bonney Canyon, the town of Ruidoso offers many recreational activities and educational opportunities. At an elevation of 7,000 feet, Ruidoso is a winter mecca for skiers and snowboarders. It has also earned a national reputation for its art galleries and local artisans shops.

Popular summer activities in the Ruidoso area include golf, horse racing, hiking and biking. In the Lincoln National Forest, fishing, camping and RVing are popular activities. Nearby, at the **Inn of the Mountain Gods Resort**, this newly renovated 5-star hotel offers a championship golf course and the popular Casino Apache with blackjack, craps, roulette, video terminals and slots. More information is available at [www.ruidoso.net](http://www.ruidoso.net).

### Ski Apache

Ski Apache is New Mexico's premier ski and snowboard resort. Sierra Blanca – the area's



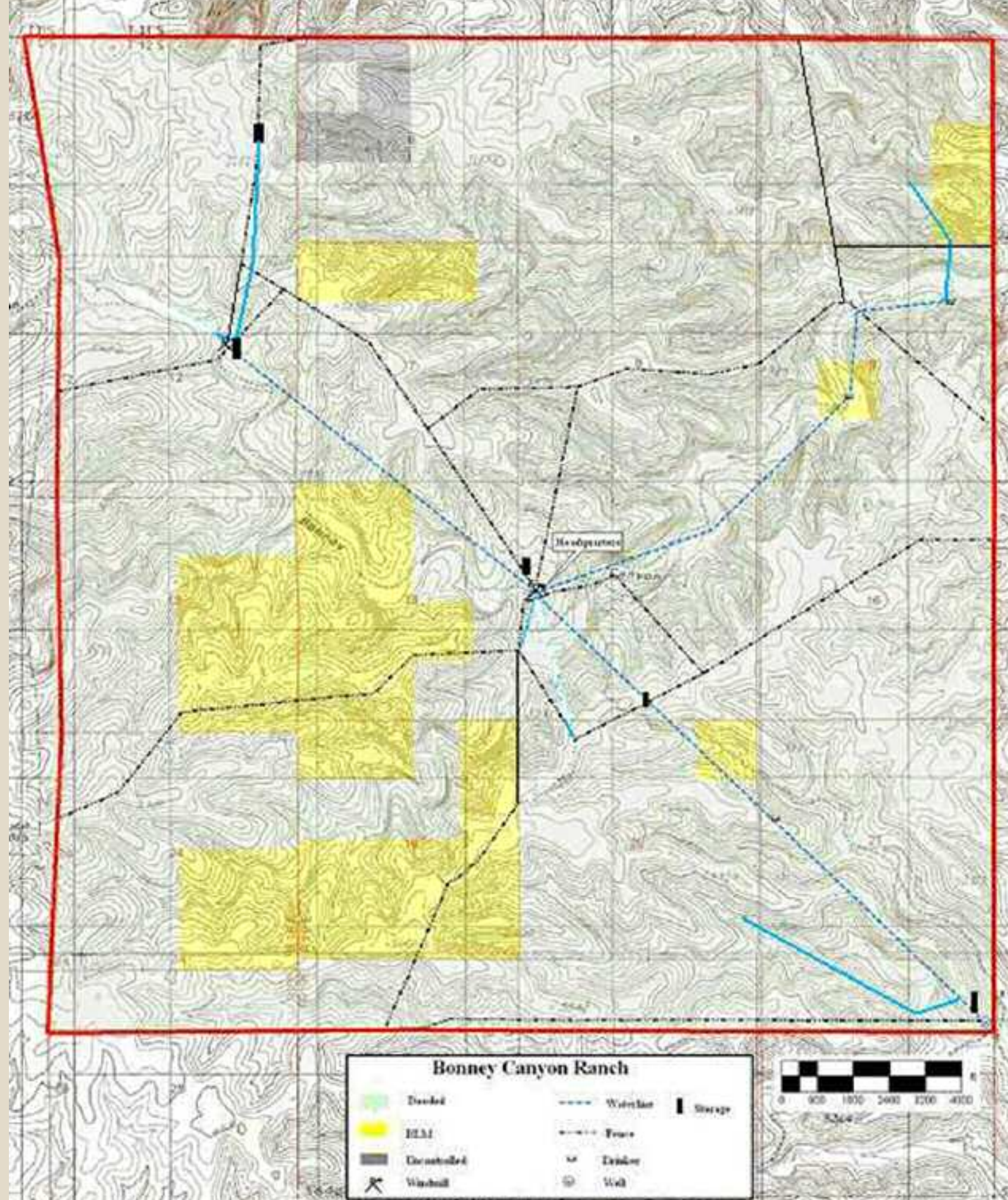
12,000 foot peak is Ski Apache's centerpiece. Fifty-five trails, beginning at 11,400 feet, fan out for skiers and snowboarders of all levels with a fall line of over 1800 feet, makes skiing and snowboarding here a blast for everyone. Ski Apache is located just minutes from the beautiful mountain resort village of Ruidoso, New Mexico.

### Ruidoso Downs Race Track & Casino

Fast horses and hot slots are the name of the game at Ruidoso Downs Race Track and Casino. The first race at Ruidoso Downs Race Track was run in 1947, then in 1999, a new era of racing in New Mexico began with the legalization of slot machine casinos at race tracks. The Billy the Kid Casino opened in May of 1999 and houses over 300 slot machines. The casino is open daily and, in 2006, paid out over \$100 million in winnings. Racing in the mountains takes place annually from Memorial Day to Labor Day, culminating with the \$2 million All American Futurity.



*Bonita Lake, located near Ruidoso, New Mexico, is about an hour away from the Bonney Canyon Ranch. The world-famous Inn of the Mountain Gods in Ruidoso is pictured below.*



# Roswell

The city of Roswell and Chaves County have been important historical sites throughout the history of human habitation in North America. Roswell, situated at the confluence of three rivers – the Spring, the Hondo, and the Pecos – was established in 1870 by Van Smith, although the first historically documented settlement (1867) in the area was a settlement of crude adobe huts at “Rio Hondo,” the present day neighborhood of Chihuahuita. The Roswell and Chaves County area was contained within the original homeland of the Mescalero Apaches, and overlapped the hunting grounds of the Comanches, and became the campsite on the Goodnight-Loving Trail, which opened in 1866. The trail brought the ranching industry to the area, which flourishes to the present day.

Visitors to the city will find a plethora of cultural activities. For example, museum and art lovers of every age and interest can explore five outstanding museums: the Anderson Museum of Contemporary Art, featuring a wide ranging collection of modern art; the Roswell Museum and Art Center, with its collection of paintings by Peter Hurd, Henriette Wyeth, Georgia O’Keefe, as well as the fabulous Rogers Aston Indian Gallery; the Historical Center for Southwest New Mexico, located in the James Phelps White stately home and filled with antiques, artifacts, and a changing gallery of exhibits; the General Douglas L. McBride Museum, with its military armament displays; and the International UFO Museum, featuring UFO phenomenon exhibits and The Alien Caffeine Espresso Bar.

There’s much more to do in this All-America City. If your cup of tea is stargazing and planet exploration, the Robert H. Goddard Planetarium is an exciting choice. Bird watchers and wildlife aficionados will relish trips to Bitter Lake Wildlife Refuge with its designated fishing and hunting areas and flocks of migratory fowl. The Spring River Park and Zoo boasts animal exhibits, paved bicycle paths, a children’s fishing lake, a carousel, and a miniature train ride. Golfers will enjoy two of the finest courses in Southeast New Mexico: Cahoon Park, an 18-hole golf course open to the public and New Mexico Military Institute’s 18-hole course also open to the public.



*A view down Main Street.*



*Downtown Roswell which houses the famous UFO Museum.*



*The Chaves County Courthouse.*



*Wells Fargo Bank Building in downtown Roswell.*

## Bonney Canyon Ranch

\$4,670,000

8,951 deeded acres    1,383 BLM acres

Offered exclusively by Ranchline

Paul Taylor, III

Toll-free 1-866-323-3111 or (505) 420-5585

www.ranchline.com    ♦    paul@ranchline.com





## *Reaching New Heights in Ranch Sales*

Ranchline is an experienced team focusing on premier ranch properties across the West. Our proven marketing strategy and excellent service keeps us in high demand. We represent the finest ranch real estate and consult with buyers in their property acquisitions, nationwide.

## *Sell Your Ranch with Ranchline*

Ranchline is leading the way in accelerated and conventional marketing of premier properties. When it's time to put your ranch on the market, nobody gets results better than Ranchline.

*Selling premier  
properties across the West...*



**[www.ranchline.com](http://www.ranchline.com)**

**Toll-free: 1-866-323-3111**

Mobile (505) 420-5585 ♦ Office (505) 622-1490

400 West 2nd, Roswell, NM 88201 ♦ e-mail: [paul@ranchline.com](mailto:paul@ranchline.com) ♦ [www.ranchline.com](http://www.ranchline.com)