

Gallo Creek Ranch



ranchline

Gallo Creek Ranch



This grand ranch, set in the magnificent foothills of the Sacramento Mountains, is a dream for the seasoned rancher. Set in the natural backdrop of rolling hills, endless canyons and scenic mountain vistas, this is a land that demands exploration of this fascinating western property.

Sprawling across the New Mexico plain, the Gallo Creek Ranch is approximately 15,000 acres (5,798 deeded and 9,207 BLM MOL) encompassing a variety of terrain from flat plains to deep canyons and plateaus.

This big country ranch has a little bit of everything. Famous for its grassy prairies, blue skies and

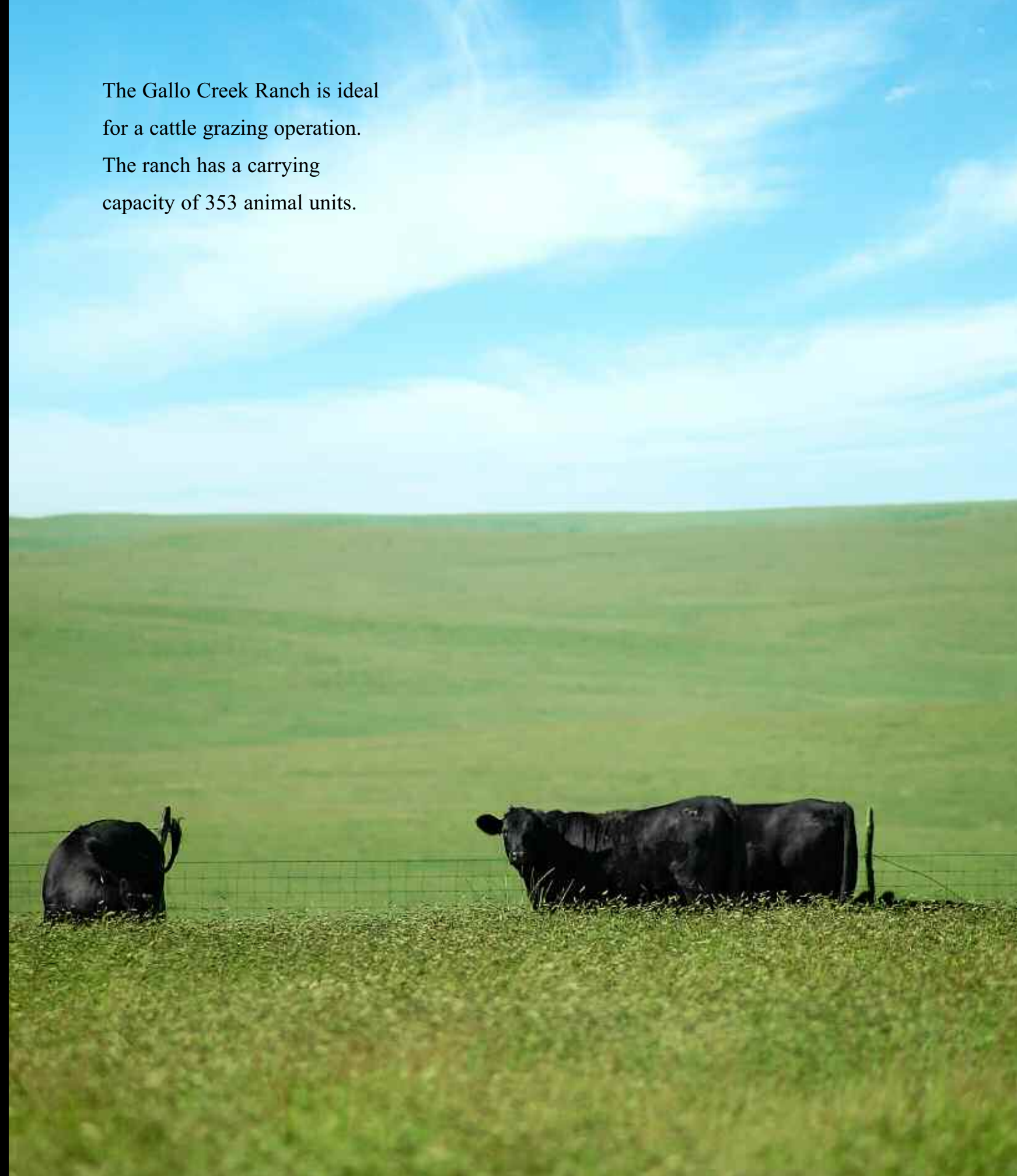
wide horizons, this ranch offers good working facilities and easy access.

Centrally located in New Mexico, this ranch property has potential in a number of areas, making it attractive to ranchers or individuals seeking a solid investment opportunity.





The Gallo Creek Ranch is ideal for a cattle grazing operation. The ranch has a carrying capacity of 353 animal units.

























Corona, New Mexico

Thirty miles from the Gallo Creek Ranch lies the village of Corona, New Mexico, an isolated, unique mountain community of some 215 persons on U.S. 54 approximately at the Lincoln and Torrance County lines. It is compact community surrounded by vast areas of open range and U.S. forest land and is located at the geographic center of New Mexico. The Village began as a cowtown in 1899, serving as a regional trade center for mining and ranching interest.

The old El Paso and Northeast Railroad was constructed from El Paso to Carrizozo in 1899 and ended in Corona until 1902 when the line was extended to Santa Rosa to connect with the Rock Island Line. The route passed through Corona and a station was established. This connection initiated the growth of Corona as a trade center.

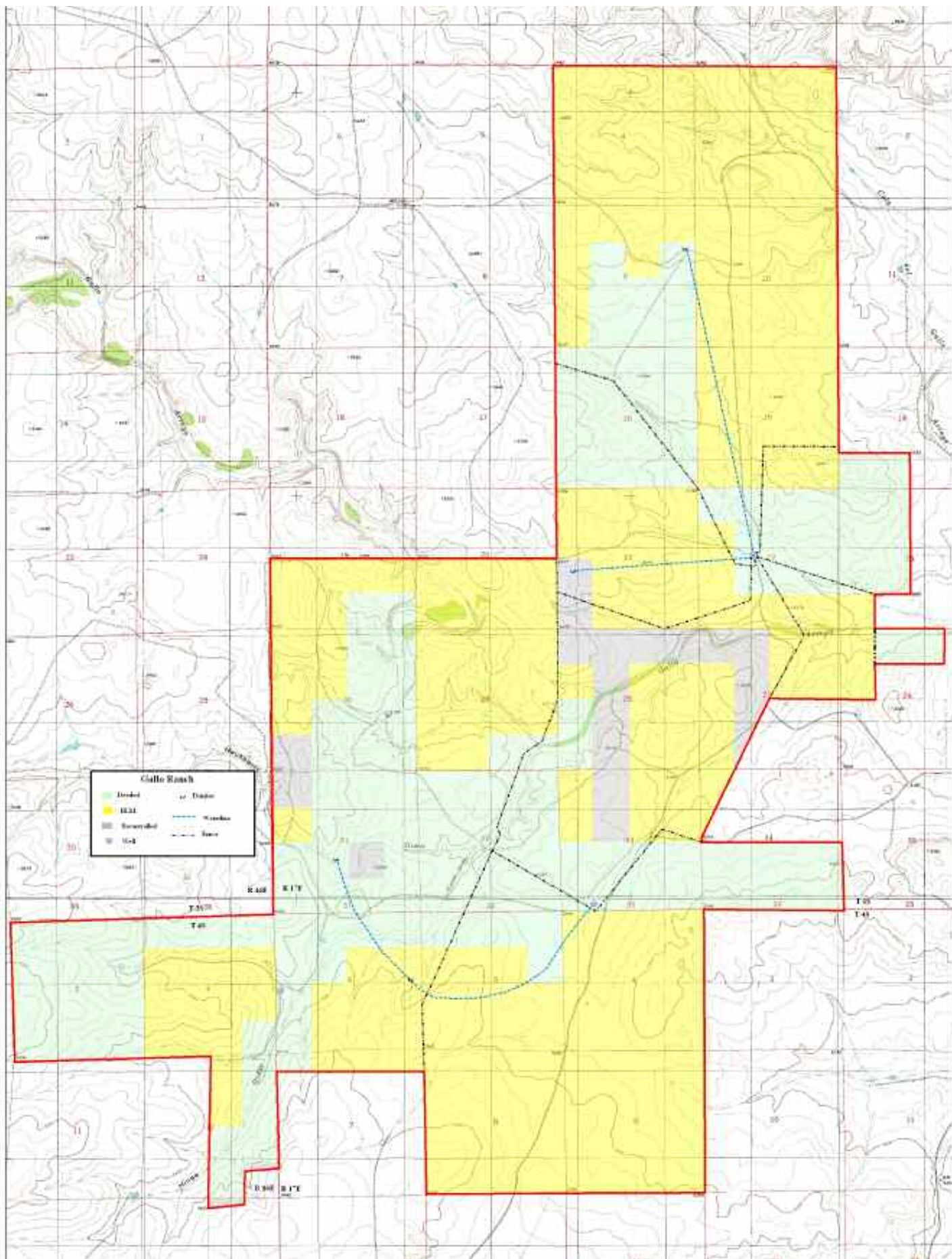
The Original plat of the townsite of Corona was

made by Colonel Frank A. DuBois Sr. He obtained title to the land under the Preemption Law by remaining on the land for six months and paying \$1.25 per acre. He dedicated the townsite to the public on May 25, 1903. Corona was not incorporated until 1947.

The Village has a post office and has a mayor/council form of government. Health services for the Corona area are provided by two Emergency Medical Technicians (EMT's) who provide ambulance service and a nurse practitioner who comes weekly from the Carrizozo Health Center to serve the citizens of Corona.

Corona's business district is located along U.S. Highway 54 and consists of one full service gasoline station, one self-serve gasoline station combined with a mini-mart, one grocery store, one cafe, one food grill, a laundry, one bar, one auto repair service, one hardware store, and one gift shop.





Nearby Attractions

A couple hours down the road from Gallo Creek Ranch, the town of Ruidoso offers many recreational activities and educational opportunities. At an elevation of 7,000 feet, Ruidoso is a winter mecca for skiers and snowboarders. It has also earned a national reputation for its art galleries and local artisans shops.

Popular summer activities in the Ruidoso area include golf, horse racing, hiking and biking. In the Lincoln National Forest, fishing, camping and RVing are popular activities. Nearby, at the **Inn of the Mountain Gods Resort**, this newly renovated 5-star hotel offers a championship golf course and the popular Casino Apache with blackjack, craps, roulette, video terminals and slots. More information is available at www.ruidoso.net.

Ski Apache

Ski Apache is New Mexico's premier ski and snowboard resort. Sierra Blanca – the



area's 12,000 foot peak is Ski Apache's centerpiece. Fifty-five

trails, beginning at 11,400 feet, fan out for skiers and snowboarders of all levels with a fall line of over 1800 feet, makes skiing and snowboarding here a blast for everyone. Ski Apache is located just minutes from the beautiful mountain resort village of Ruidoso, New Mexico.

Ruidoso Downs Race Track & Casino

Fast horses and hot slots are the name of the game at Ruidoso Downs Race Track and Casino. The first race at Ruidoso Downs Race Track was run in 1947, then in 1999, a new era of racing in New Mexico began with the legalization of slot machine casinos at race tracks. The Billy the Kid Casino opened in May of 1999 and houses over 300 slot machines. The casino is open daily and, in 2006, paid out over \$100 million in winnings. Racing in the mountains takes place annually from Memorial Day to Labor Day, culminating with the \$2 million All American Futurity.



Bonita Lake, located near Ruidoso, New Mexico, is a couple hours away from the Gallo Creek Ranch. The world-famous Inn of the Mountain Gods in Ruidoso is pictured below.



Roswell

An hour south of Gallo Creek Ranch in Chaves County is the city of Roswell. This community of 50,000 residents offers a plethora of cultural activities. For example, museum and art lovers of every age and interest can explore five outstanding museums: the Anderson Museum of Contemporary Art, featuring a wide ranging collection of modern art; the Roswell Museum and Art Center, with its collection of paintings by Peter Hurd, Henriette Wyeth, Georgia O'Keefe, as well as the fabulous Rogers Aston Indian Gallery; the Historical Center for Southwest New Mexico, located in the James Phelps White stately home and filled with antiques, artifacts, and a changing gallery of exhibits; the General Douglas L. McBride Museum, with its military armament displays; and the International UFO Museum, featuring UFO phenomenon exhibits and The Alien Caffeine Espresso Bar.

There's much more to do in this All-America City. If your cup of tea is stargazing and planet exploration, the Robert H. Goddard Planetarium is an exciting choice. Bird watchers and wildlife aficionados will relish trips to Bitter Lake Wildlife Refuge with its designated fishing and hunting areas and flocks of migratory fowl. The Spring River Park and Zoo boasts animal exhibits, paved bicycle paths, a children's fishing lake, a carousel, and a miniature train ride. Golfers will enjoy two of the finest courses in Southeast New Mexico: Cahoon Park, an 18-hole golf course open to the public and New Mexico Military Institute's 18-hole course, also open to the public.



A view down Roswell's Main Street.



Albuquerque/Santa Fe

Two hours northwest of Gallo Creek Ranch you will find Albuquerque and Santa Fe, two of the economic and cultural meccas in all the Southwest. Albuquerque and its 700,000 residents offer all you could want in shopping and entertainment, while Santa Fe draws visitors worldwide to its world-class art galleries.

Gallo Creek Ranch

\$2,600,000

5,798 deeded acres 9,207 BLM acres

Offered exclusively by Ranchline

Paul Taylor, III

Toll-free 1-866-323-3111 or (505) 420-5585

www.ranchline.com ♦ paul@ranchline.com





Reaching New Heights in Ranch Sales

Ranchline is an experienced team focusing on premier ranch properties across the West. Our proven marketing strategy and excellent service keeps us in high demand. We represent the finest ranch real estate and consult with buyers in their property acquisitions, nationwide.

Sell Your Ranch with Ranchline

Ranchline is leading the way in accelerated and conventional marketing of premier properties. When it's time to put your ranch on the market, nobody gets results better than Ranchline.

*Selling premier
properties across the West...*



www.ranchline.com

Toll-free: 1-866-323-3111

Mobile (505) 420-5585 ♦ Office (505) 622-1490

400 West 2nd, Roswell, NM 88201 ♦ e-mail: paul@ranchline.com ♦ www.ranchline.com