

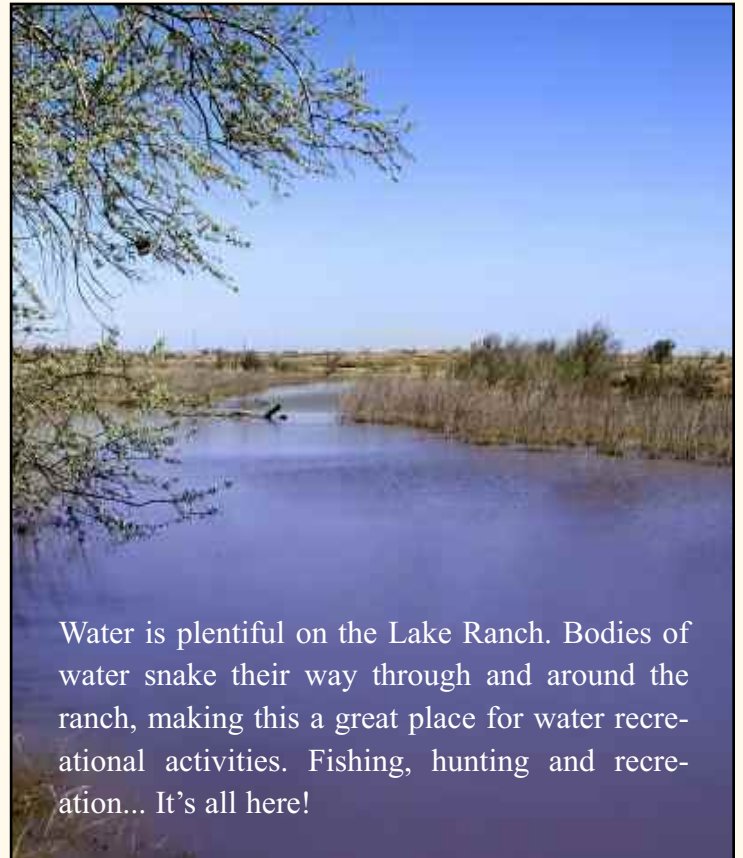
# Lake Ranch

Quay County, New Mexico ♦ 240 deeded acres; (MOL) \$1,200,000



## Water puts the Lake Ranch in a league of its own

**L**ocated in central New Mexico, the Lake Ranch offers a little bit of everything. Spectacular views of nearby mountains, easy access off Interstate 40 and many other features that make this ranch a great opportunity. Situated just off Interstate-40 between the metropolitan areas of Albuquerque and Amarillo, Texas, Vista Ranch provides an excellent location with international airports less than two hours away.



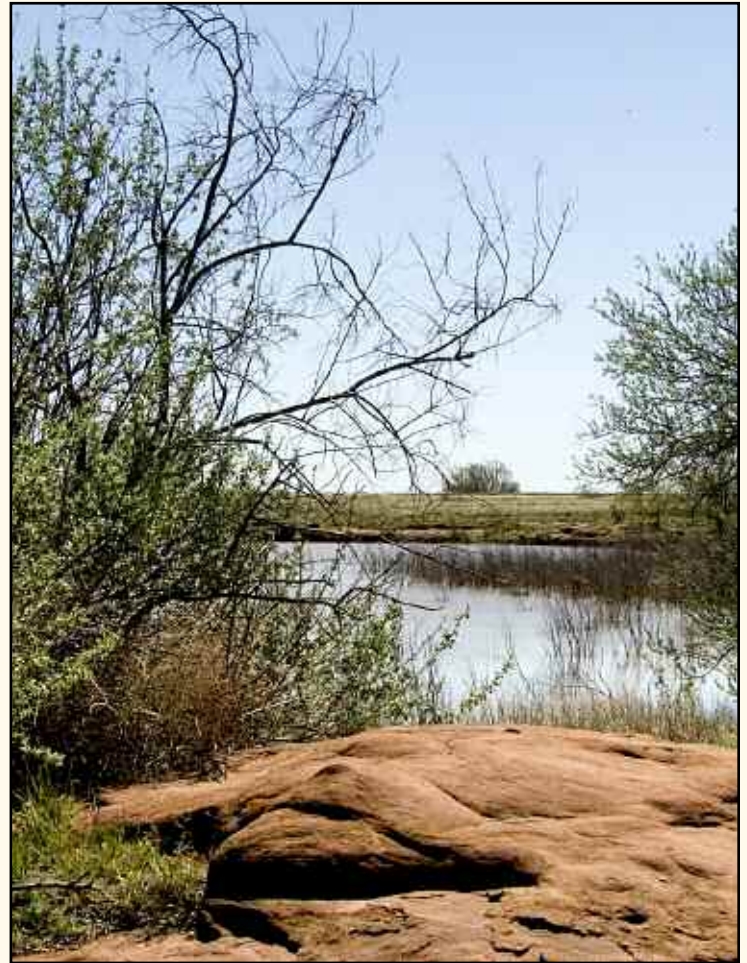
Water is plentiful on the Lake Ranch. Bodies of water snake their way through and around the ranch, making this a great place for water recreational activities. Fishing, hunting and recreation... It's all here!



# Lake Ranch



# Lake Ranch



*Fishing, Hunting  
& Recreation...  
It's all here!*



# Lake Ranch

## FARMING



*Lake Ranch  
offers 60  
acres  
of water  
rights*

This region of New Mexico just east of Tucumcaro is know for its farming. Several areas of the Lake Ranch are great for farming. Crops in this area are alfalfa, wheat, cotton, milo and others.

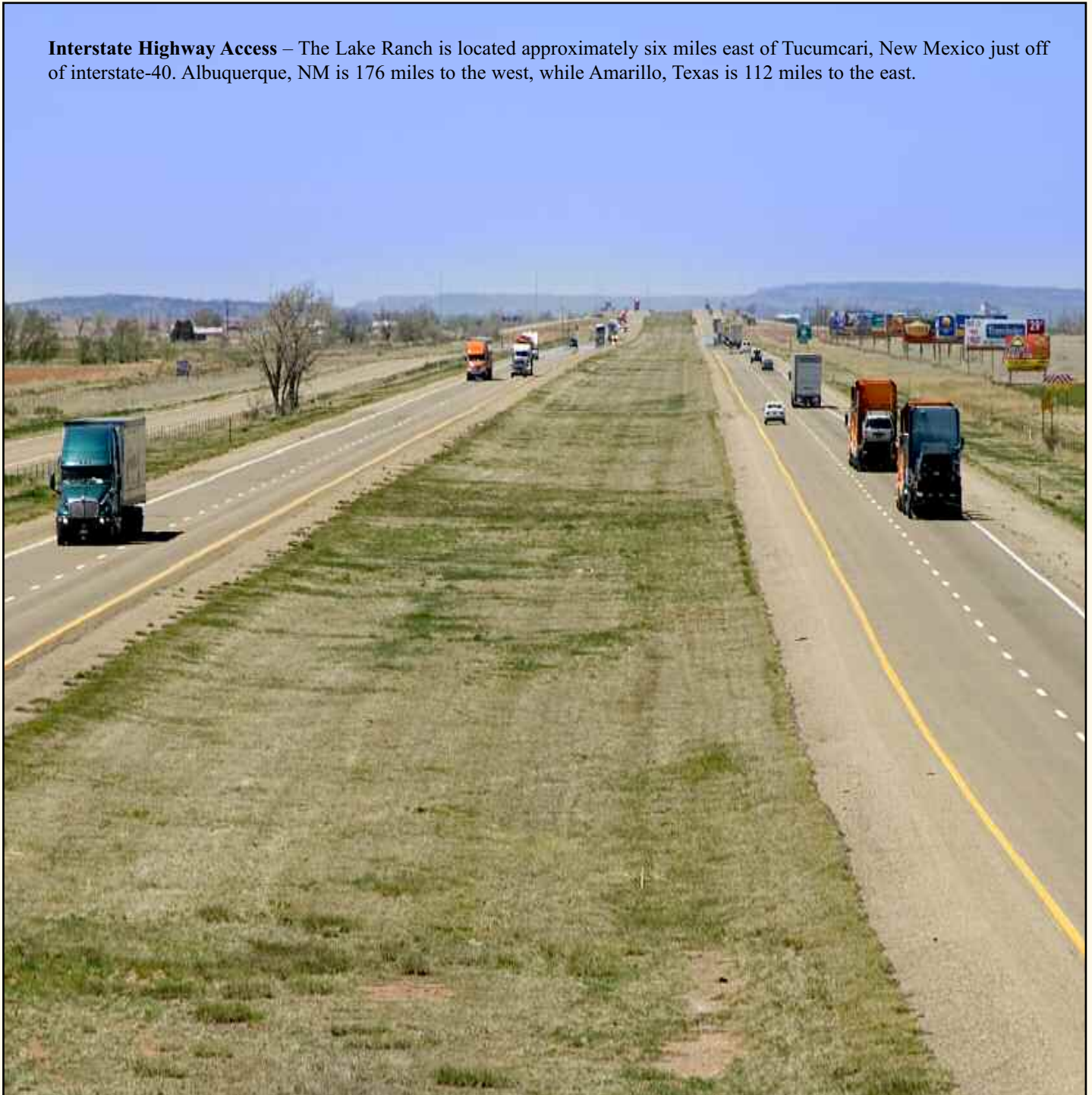


# Lake Ranch



# Lake Ranch

**Interstate Highway Access** – The Lake Ranch is located approximately six miles east of Tucumcari, New Mexico just off of interstate-40. Albuquerque, NM is 176 miles to the west, while Amarillo, Texas is 112 miles to the east.



# Lake Ranch

## Nearby Attractions

### Las Vegas, New Mexico

Nestled along the foothills of the Sangre de Cristo Mountains, Las Vegas and San Miguel County is an enchanting place to live and do business. It is a very interesting and diverse area. Regardless of what you are seeking, you will be sure to find it here!

Not only are there two National Forests within minutes of downtown Las Vegas, you may also enjoy visiting one of the many campgrounds along the Gallinas River. Enjoy the primitive scenes of nature, along with various forms of wildlife. Don't feel like roughing it, but still want to experience the outdoors, visit one of the large lakes in the state – Storrie Lake State Park. Only a few miles from town, the lake offers tent and RV camping, as well as hiking, fishing, boating and other water sports.

### Albuquerque/Santa Fe

Only a couple of hours away on Interstate-40 you will find Albuquerque. Santa Fe, off Interstate-25 is the world's fourth largest art center, These are two of the economic and cultural meccas in all the Southwest. Albuquerque and its 700,000 residents offer all you could want in shopping and entertainment, while Santa Fe draws visitors worldwide to its world-class art galleries.

### Santa Rosa State Park

Less than 60 miles from Tucumcari, Santa Rosa Lake State Park, a high plains Pecos River reservoir, offers a variety of water sports. Anglers often catch bass, catfish, and walleye. Hiking trails wind through the wild areas around the lake.

Eagles roost on snags at water's edge or on small islands on the lake. Also look for scaled quail, mourning dove, and migrating osprey.

Corps of Engineers visitor center displays about area history, creation of dam, and natural history. Nearby Santa Rosa is famous for its clean natural lakes where fledgling scuba divers from around the country come to learn scuba diving.



### Storrie Lake State Park

*Near Las Vegas, NM, the lake's serene waters are open for fishing year-round. Storrie Lake boasts consistent winds that provide excellent conditions for sailing and windsurfing. With the arrival of the Santa Fe Railway in 1879, Las Vegas and the surrounding area became a hangout of some the shadiest characters of the Old West, including Doc Holliday, Billy the Kid and Wyatt Erp. The visitor center features historical exhibits about the Santa Fe Trail and 19th century. Birdwatching is a must in order to view the geese and ducks that flock to the lake during seasonal migrations. Follow walking-trails through sagebrush-covered landscape spotted with cactus, yucca and wildflowers.*



*Albuquerque is only a couple of hours away from the ranch.*



*Santa Rosa State Park is only an hour from Tucumcari.*



*Scuba diver at Santa Rosa State Park*



# Lake Ranch

**C**onchas Lake State Park offers a wide variety of water sport activities including boating, fishing and water-skiing at this refreshing, 25-mile long reservoir.

## **Explore**

One of the state's largest lakes includes 60 miles of varied shoreline, secluded coves, canyons, and sandy beaches. Ancient rock formations date back to the Age of Dinosaurs. Observant visitors may discover the fossils of ancient sea creatures.

## **Full Service Park**

With its ample camping and picnicking facilities, boat ramps, marina, bait and tackle supplies, food services, and playgrounds, Conchas offers visitors much.

## **Warm Water Fishing**

Anglers can catch walleye, largemouth bass, channel catfish, bluegill, and crappie. Getting There Conchas Lake State Park is 34 miles north-west of Tucumcari via NM 104.



*Conchas Lake State Park offers a variety of water activities*

*Park is located 34 miles from Tucumcari*



# Lake Ranch

## UTE LAKE STATE PARK

*Ute Lake State Park, a Canadian River reservoir located just 24 miles northeast of Tucumcari, offers some of the best walleye fishing in New Mexico. Anglers can also try their luck for bass, crappie, and catfish.*

### Ute Lake is one of New Mexico's longest bodies of water

Ute Lake is one of the longest lakes in the state at nearly 13 miles, and also is narrow with its width never exceeding one mile across. It boasts a marina and a full range of water sport activities.

#### Plentiful Wildlife

With its scores of inlets to explore, the lake abounds in ducks, quail, doves and pheasant. Deer and antelope roam the surrounding plains and mesas.

#### 24-hour Fishing

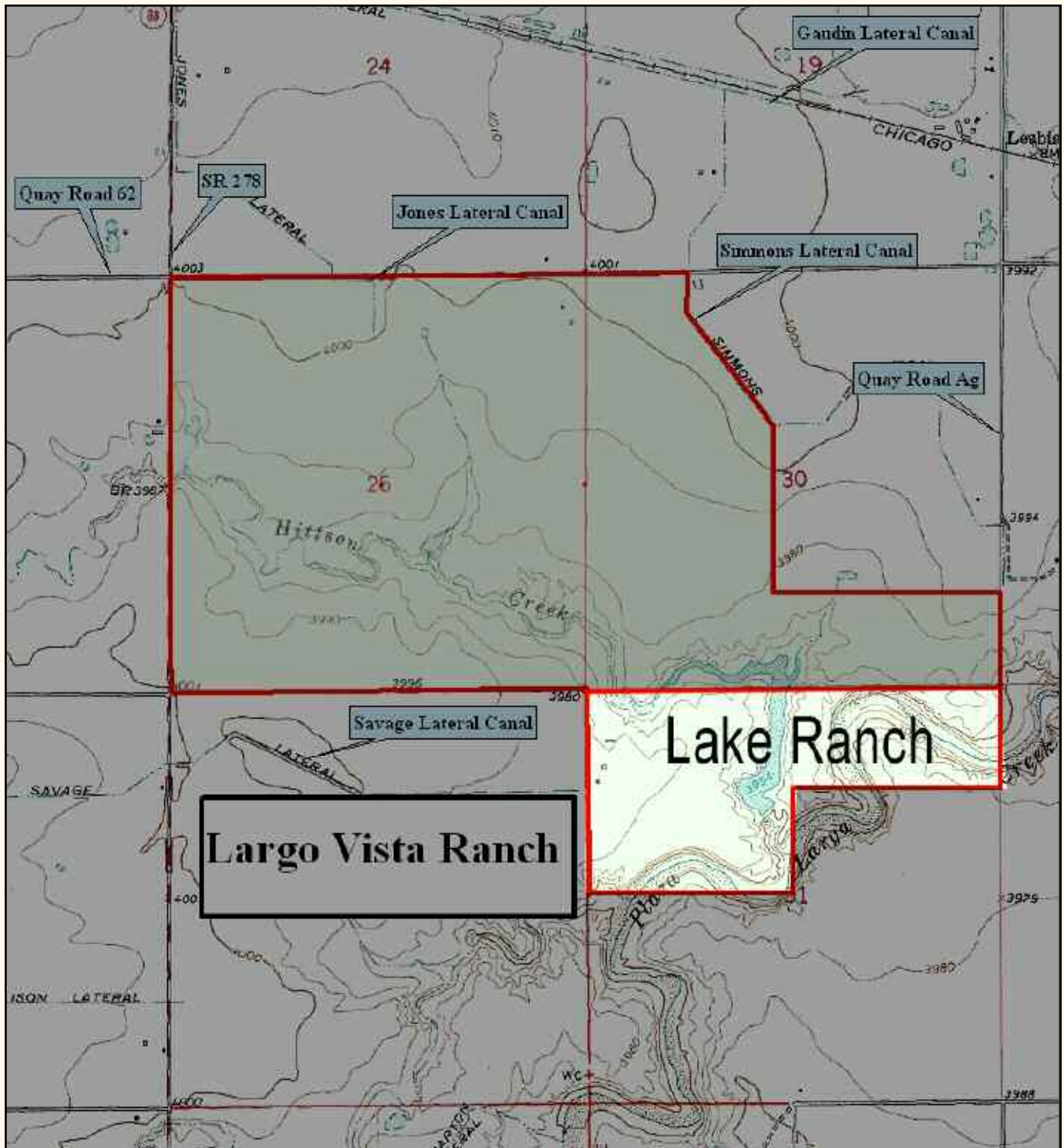
Round-the-clock fishing is available every day of the year for angler fanatics. The lake has produced several state-record game fish.

#### Getting There

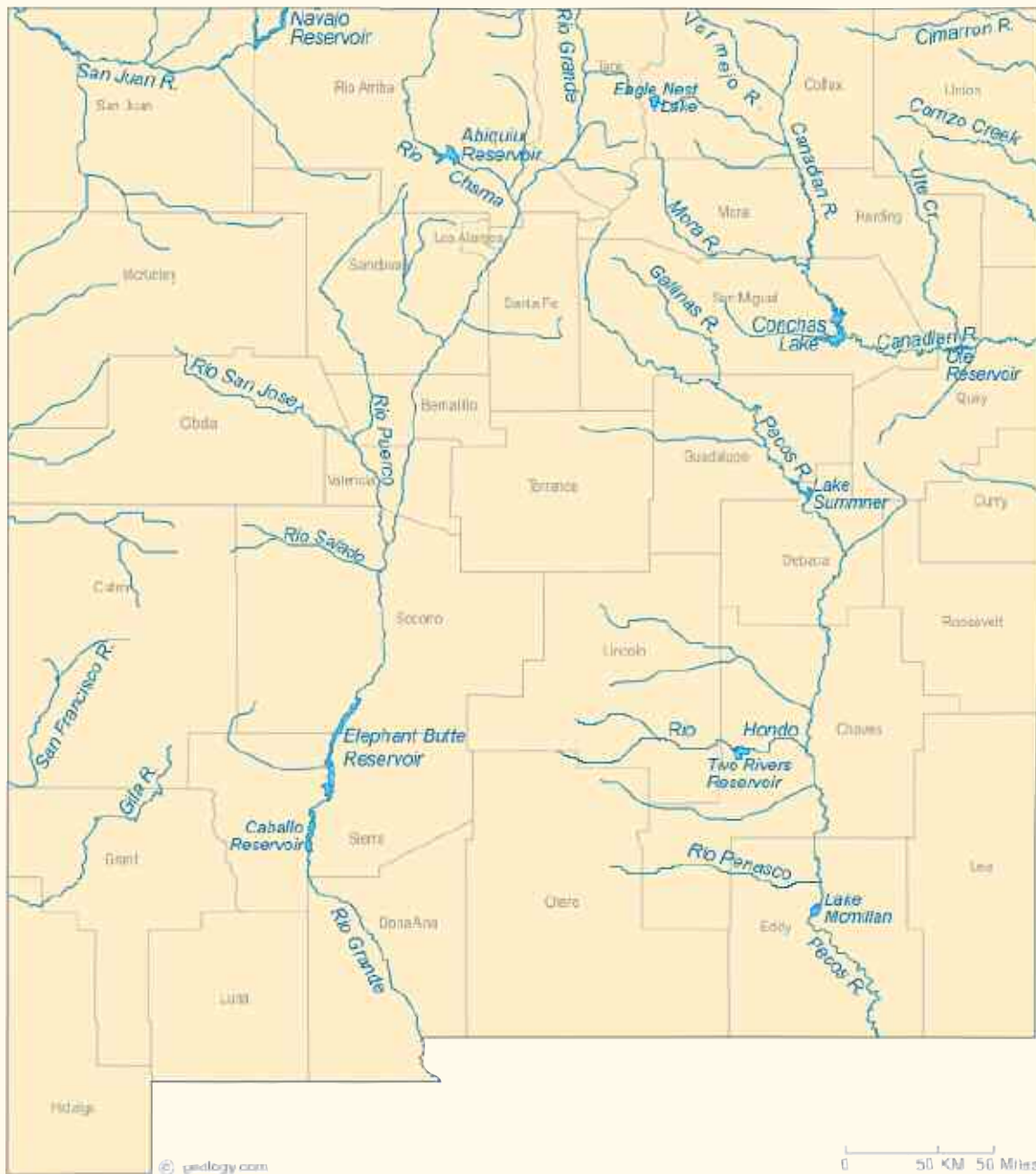
Ute Lake State Park is 24 miles northeast of Tucumcari and three miles west of Logan via NM 540.



# Lake Ranch



# Lake Ranch



This map shows the major streams and rivers of New Mexico and some of the larger lakes. The Great Continental Divide crosses New Mexico. The western portion of the state is in the Pacific Ocean Watershed and most of the drainage leaves the state through the San Juan, San Francisco and Gila Rivers. The eastern part of the state is in the Gulf of Mexico Watershed and most of the drainage leaves the state through the Rio Grande, Pecos and Canadian Rivers. A small part of New Mexico is a closed basin. The Estancia Basin, near Albuquerque does not drain to the Pacific or the Gulf of Mexico.



# Lake Ranch

**Distance from Lake Ranch to:**

|                     |           |                       |            |
|---------------------|-----------|-----------------------|------------|
| Albuquerque .....   | 175 miles | Clovis .....          | .84 miles  |
| Santa Fe .....      | 168 miles | Moriarity .....       | 146 miles  |
| Roswell .....       | 195 miles | Amarillo, Texas ..... | 115 miles  |
| Tucumcari .....     | .6 miles  | Lubbock, Texas .....  | .233 miles |
| Las Vegas, NM ..... | 124 miles |                       |            |

