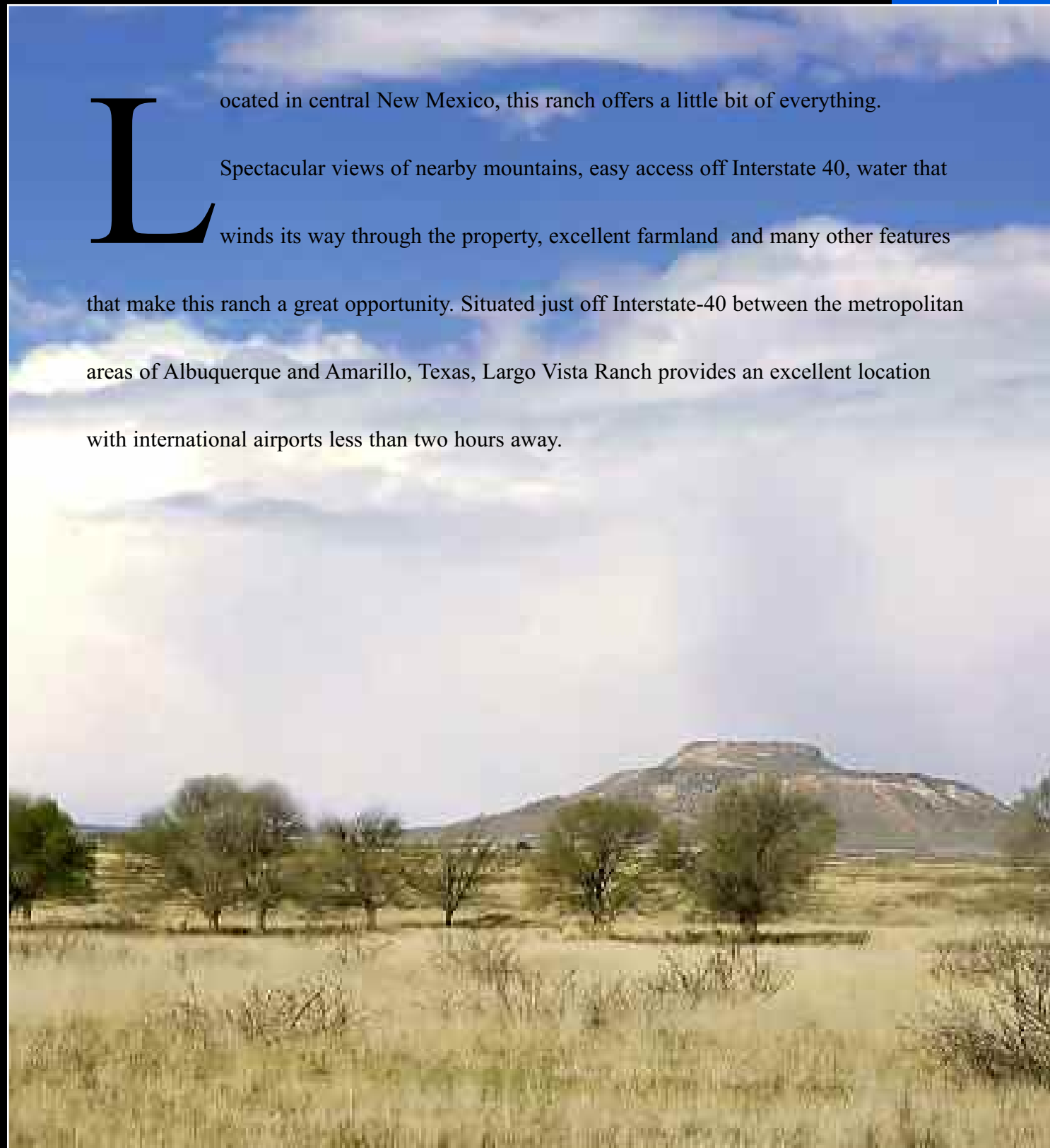


Largo Vista Ranch



Rugged ranch roads, spectacular views and giant blue skies make the Largo Vista Ranch a sportsman's paradise.

Located in central New Mexico, this ranch offers a little bit of everything. Spectacular views of nearby mountains, easy access off Interstate 40, water that winds its way through the property, excellent farmland and many other features that make this ranch a great opportunity. Situated just off Interstate-40 between the metropolitan areas of Albuquerque and Amarillo, Texas, Largo Vista Ranch provides an excellent location with international airports less than two hours away.





With 433 acres of water rights, the Largo Vista Ranch offers fantastic farming opportunities. Crops that have a proven track record in this area include alfalfa, wheat, cotton, milo and others.









New Mexico is famous for its magnificent sunrises and sunsets, and Largo Vista Ranch is no exception. With long horizons, spectacular skies are a common occurrence.











*Abandoned adobe structures
that were built in another
era...*

*Dilapidated buildings that
speak of another time...*

*It's all part of the romance
of a time gone by.*

*It's what makes the Largo
Vista Ranch a rich
part of New Mexico's
western heritage.*



This region of New Mexico just east of Tucumcaro is know for its farming. With its 433 acres of water rights, several areas of the Largo Vista Ranch are ideal for farming. Crops that excell in this area include alfalfa, wheat, cotton, milo and others.



Interstate Highway Access – The Largo Vista Ranch is located approximately six miles east of Tucumcari, New Mexico just off of interstate-40. Albuquerque, NM is 176 miles to the west, while Amarillo, Texas is 112 miles to the east.



Distance from Vista Largo Draw Ranch to:

Albuquerque	175 miles	Clovis84 miles
Santa Fe	168 miles	Moriarity146 miles
Roswell	195 miles	Amarillo, Texas	115 miles
Tucumcari6 miles	Lubbock, Texas233 miles
Las Vegas, NM	124 miles		

Nearby Attractions

Las Vegas, New Mexico

Nestled along the foothills of the Sangre de Cristo Mountains, Las Vegas and San Miguel County is an enchanting place to live and do business. It is a very interesting and diverse area. Regardless of what you are seeking, you will be sure to find it here! Not only are there two National Forests within minutes of downtown Las Vegas, you may also enjoy visiting one of the many campgrounds along the Gallinas River. Enjoy the primitive scenes of nature, along with various forms of wildlife. Don't feel like roughing it, but still want to experience the outdoors, visit one of the large lakes in the state – Storrie Lake State Park. Only a few miles from town, the lake offers tent and RV camping, as well as hiking, fishing, boating and other water sports.



Storrie Lake State Park

Near Las Vegas, NM, the lake's serene waters are open for fishing year-round. Storrie Lake boasts consistent winds that provide excellent conditions for sailing and windsurfing. With the arrival of the Santa Fe Railway in 1879, Las Vegas and the surrounding area became a hangout of some of the shadiest characters of the Old West, including Doc Holliday, Billy the Kid and Wyatt Erp. The visitor center features historical exhibits about the Santa Fe Trail and 19th century. Birdwatching is a must in order to view the geese and ducks that flock to the lake during seasonal migrations. Follow walking-trails through sagebrush-covered landscape spotted with cactus, yucca and wildflowers.

Albuquerque/Santa Fe

Only a couple of hours away on Interstate-40 you will find Albuquerque. Santa Fe, off Interstate-25 is the world's fourth largest art center, These are two of the economic and cultural meccas in all the Southwest. Albuquerque and its 700,000 residents offer all you could want in shopping and entertainment, while Santa Fe draws visitors worldwide to its world-class art galleries.



Albuquerque is only a couple of hours away from the ranch.

Santa Rosa State Park

Less than 60 miles from Tucumcari, Santa Rosa Lake State Park, a high plains Pecos River reservoir, offers a variety of water sports. Anglers often catch bass, catfish, and walleye. Hiking trails wind through the wild areas around the lake.

Eagles roost on snags at water's edge or on small islands on the lake. Also look for scaled quail, mourning dove, and migrating osprey.

Corps of Engineers visitor center displays about area history, creation of dam, and natural history. Nearby Santa Rosa is famous for its clean natural lakes where fledgling scuba divers from around the country come to learn scuba diving.



Scuba diver at Santa Rosa State Park



Santa Rosa State Park is only an hour from Tucumcari.

Conchas Lake State Park offers a wide variety of water sport activities including boating, fishing and water-skiing at this refreshing, 25-mile long reservoir.

Explore

One of the state's largest lakes includes 60 miles of varied shoreline, secluded coves, canyons, and sandy beaches. Ancient rock formations date back to the Age of Dinosaurs. Observant visitors may discover the fossils of ancient sea creatures.

Full Service Park

With its ample camping and picnicking facilities, boat ramps, marina, bait and tackle supplies, food services, and playgrounds, Conchas offers visitors much.

Warm Water Fishing

Anglers can catch walleye, largemouth bass, channel catfish, bluegill, and crappie. Getting There Conchas Lake State Park is 34 miles northwest of Tucumcari via NM 104.

Conchas Lake State Park offers a variety of water activities

Park is located 34 miles from Tucumcari



Ute Lake State Park

Ute Lake State Park, a Canadian River reservoir located just 24 miles northeast of Tucumcari, offers some of the best walleye fishing in New Mexico. Anglers can also try their luck for bass, crappie, and catfish.



Ute Lake is one of New Mexico's longest bodies of water

Ute Lake is one of the longest lakes in the state at nearly 13 miles, and also is narrow with its width never exceeding one mile across. It boasts a marina and a full range of water sport activities.

Plentiful Wildlife

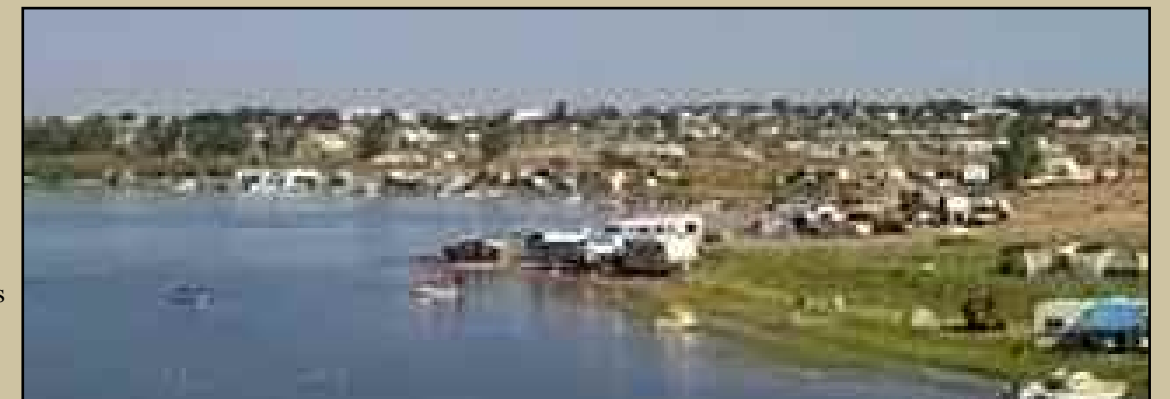
With its scores of inlets to explore, the lake abounds in ducks, quail, doves and pheasant. Deer and antelope roam the surrounding plains and mesas.

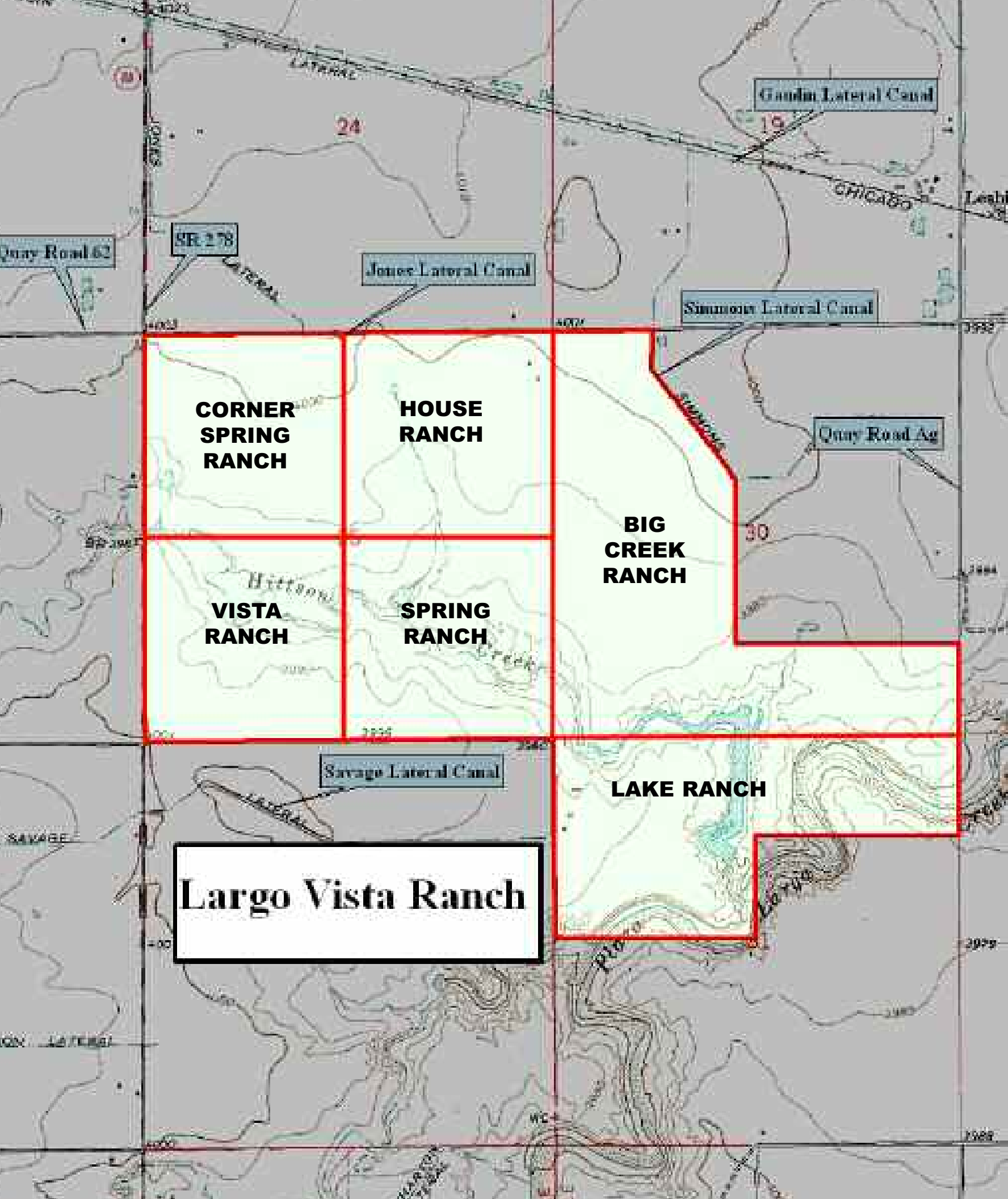
24-hour Fishing

Round-the-clock fishing is available every day of the year for angler fanatics. The lake has produced several state-record game fish.

Getting There

Ute Lake State Park is 24 miles northeast of Tucumcari and three miles west of Logan via NM 540.





Largo Vista Ranch

The Ranches

Corner Spring Ranch	160 deeded acres	60 acres water rights	\$320,000
House Ranch	160 deeded acres	60 acres water rights	\$420,000
Big Creek Ranch	353 deeded acres	60 acres water rights	\$975,000
Lake Ranch	240 deeded acres	60 acres water rights	\$1,200,000
Spring Ranch	160 deeded acres	60 acres water rights	\$320,000
Vista Ranch	160 deeded acres	60 acres water rights	\$320,000

Largo Vista Ranch

Marketed exclusively by Ranchline

Paul Taylor, III

1-866-323-3111

Mobile (505) 420-5585 • Office (505) 622-1490

e-mail: paul@ranchline.com

www.ranchline.com



Reaching New Heights in Ranch Sales

Ranchline is an experienced team focusing on premier ranch properties across the West. Our proven marketing strategy and excellent service keeps us in high demand. We represent the finest ranch real estate and consult with buyers in their property acquisitions, nationwide.

Sell Your Ranch with Ranchline

Ranchline is leading the way in accelerated and conventional marketing of premier properties. When it's time to put your ranch on the market, nobody gets results better than Ranchline.

*Selling premier
properties across the West...*



www.ranchline.com

Toll-free: 1-866-323-3111

Mobile (505) 420-5585 ♦ Office (505) 622-1490

400 West 2nd, Roswell, NM 88201 ♦ e-mail: paul@ranchline ♦ www.ranchline.com