

*The
Monument Canyon
Ranch*




ranchline

Seasoned with the flavor of the Old West...

...the Monument Canyon Ranch sits on 12,340 acres of beautiful New Mexico terrain. Nestled in the foothills of the Capitan Mountains, this magnificent ranch is a beautiful display of rolling hills, canyons, and large valleys.

Located just 40 miles north and west of Roswell, New Mexico, the Monument Canyon offers a multitude of opportunity. As a working cattle ranch, prospective buyers will be impressed by the condition of the fences, pens, barns and other facilities. All are in excellent condition. This ranch is also a recreational mecca as the diverse landscape offers a myriad of opportunity for the outdoorsman and the sportsman.





*The Capitan Mountains are the backdrop
for beautiful views and magnificent sunsets...*

A working cattle ranch...

With a carrying capacity of approximately 290 head, the Monument Canyon is the perfect opportunity for a cattle grazing operation. The large barn, shop, and brand new set of working pens with a hydraulic chute are ready to go. The working area also features a new set of digital scales.

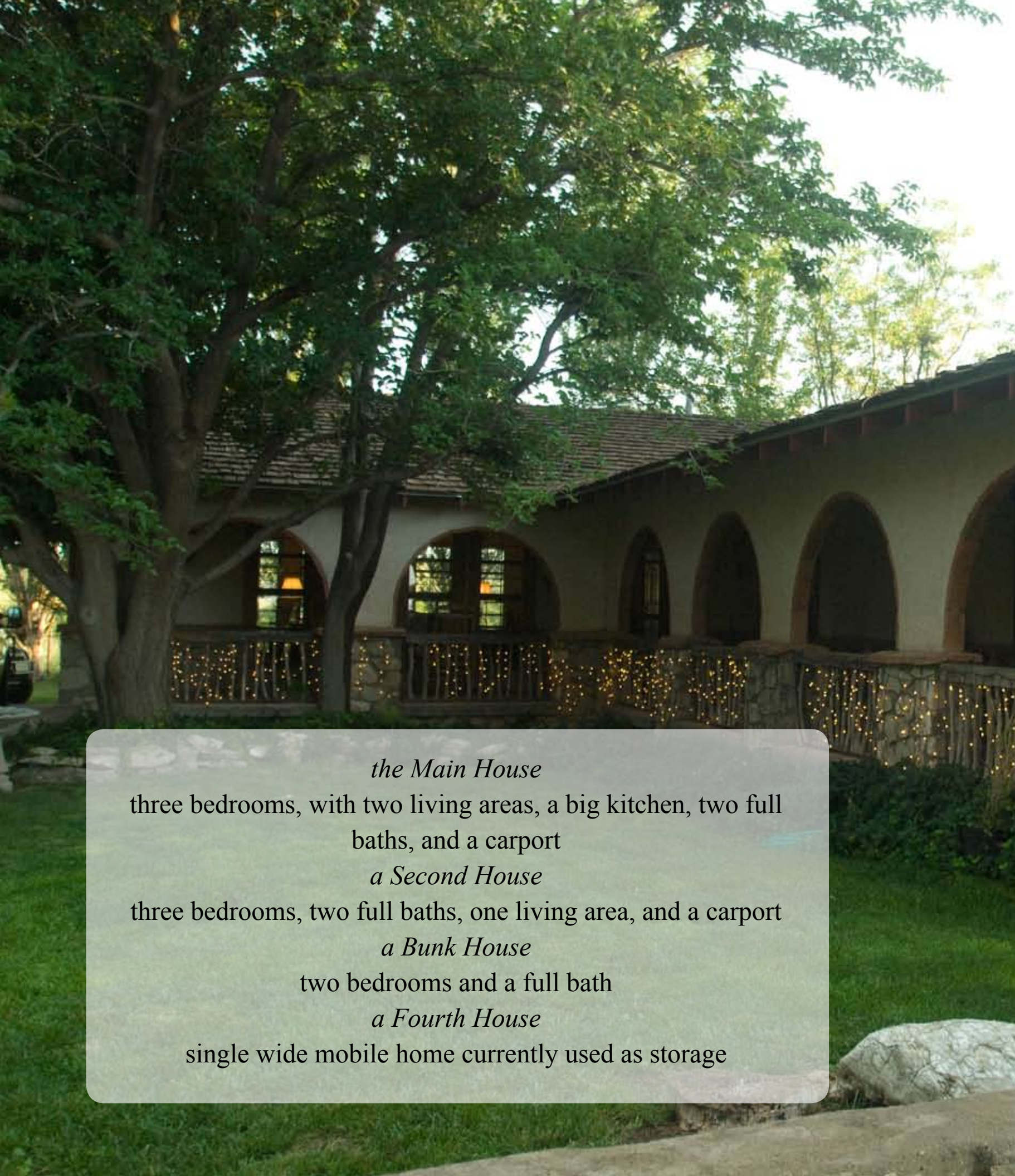




*Facilities in
excellent condition...*



*A beautiful place
to call home...*



the Main House
three bedrooms, with two living areas, a big kitchen, two full
baths, and a carport

a Second House
three bedrooms, two full baths, one living area, and a carport

a Bunk House
two bedrooms and a full bath

a Fourth House
single wide mobile home currently used as storage

Breathtaking views of beautiful hills & valleys...



Abundant water supply...

The Monument Canyon is equipped with two partnership wells and three full ownership wells, with one powered by a solar pump, and the rest on electric submersible pumps. The ranch also features 15 drinkers, and 10 miles of new pipe. Numerous earthen tanks can also be found throughout the property.



Wildlife roams freely...

This area of New Mexico is rich with many types of wildlife. The Monument Canyon has excellent cover and is a perfect habitat for many animals. The abundant supply of water is also an attraction for deer, quail, dove, bobcat, mountain lion, barbary sheep, and fox, just to name a few.







Native grasses & colorful New Mexico wildflowers...



Roswell

The city of Roswell and Chaves County have been important historical sites throughout the history of human habitation in North America. Roswell, situated at the confluence of three rivers – the Spring, the Hondo, the Pecos – was established in 1870 by Van Smith, although the first historically documented settlement (1867) in the area was a settlement of crude adobe huts at “Rio Hondo,” the present day neighborhood of Chihuahuita. The Roswell and Chaves County area was contained within the original homeland of the Mescalero



A view down Main Street.

Apaches and overlapped the hunting grounds of the Comanche’s and became the campsite on the Goodnight-Loving Trail, which opened in 1866. The trail brought the ranching industry to the area, which flourishes to the present day.

Visitors to the city will find a plethora of cultural activities. For example, museum and art lovers of every age and interest can explore five outstanding museums: the Anderson Museum of Contemporary Art, featuring a wide ranging collection of modern art; the Roswell Museum and Art Center, with its collection of paintings by Peter Hurd, Henriette Wyeth, Georgia O’Keefe, as well as the fabulous Rogers Aston Indian Gallery; the Historical Center for Southwest New Mexico, located in the James Phelps White stately home and filled with antiques, artifacts, and a changing gallery of exhibits; the General Douglas L. McBride Museum, with its military armament displays; and the International UFO Museum, featuring UFO phenomenon exhibits and The Alien Caffeine Espresso Bar.

There’s much more to do in this All-America City. If your cup of tea is stargazing and planet exploration, the Robert H. Goddard Planetarium is an exciting choice. Bird watchers and wildlife aficionados will relish trips to Bitter Lake Wildlife Refuge with its designated fishing and hunting areas and flocks of migratory fowl. The Spring River Park and Zoo boasts animal exhibits, paved bicycle paths, a children’s fishing lake, a carousel, and a miniature train ride. Golfers will enjoy two of the finest courses in Southeast New Mexico: Cahoon Park, an 18-hole golf course open to the public and New Mexico Military Institute’s 18-hole course also open to the public.



Downtown Roswell which houses the famous UFO Museum.



Wells Fargo Bank Building in downtown Roswell.



The Chaves County Courthouse.

Mountain Attractions

An hour down the road from Pyatt Well Ranch, the town of Ruidoso offers many recreational activities and educational opportunities. At an elevation of 7,000 feet, Ruidoso is a winter mecca for skiers and snowboarders. It has also earned a national reputation for its art galleries and local artisans shops.

Popular summer activities in the Ruidoso area include golf, horse racing, hiking and biking. In the Lincoln National Forest, fishing, camping and RVing are popular activities. Nearby, at the **Inn of the Mountain Gods Resort**, this newly renovated 5-star hotel offers a championship golf course and the popular Casino Apache with blackjack, craps, roulette, video terminals and slots. More information is available at www.ruidoso.net.

Ski Apache

Ski Apache is New Mexico's premier ski and snowboard resort. Sierra Blanca – the area’s 12,000 foot peak is Ski Apache's centerpiece. Fifty-five trails, beginning at 11,400 feet, fan out for skiers and snowboarders of all levels with a fall line of over 1800 feet, makes skiing and snowboarding here a blast for everyone. Ski Apache is located just minutes from the beautiful mountain resort village of Ruidoso, New Mexico.

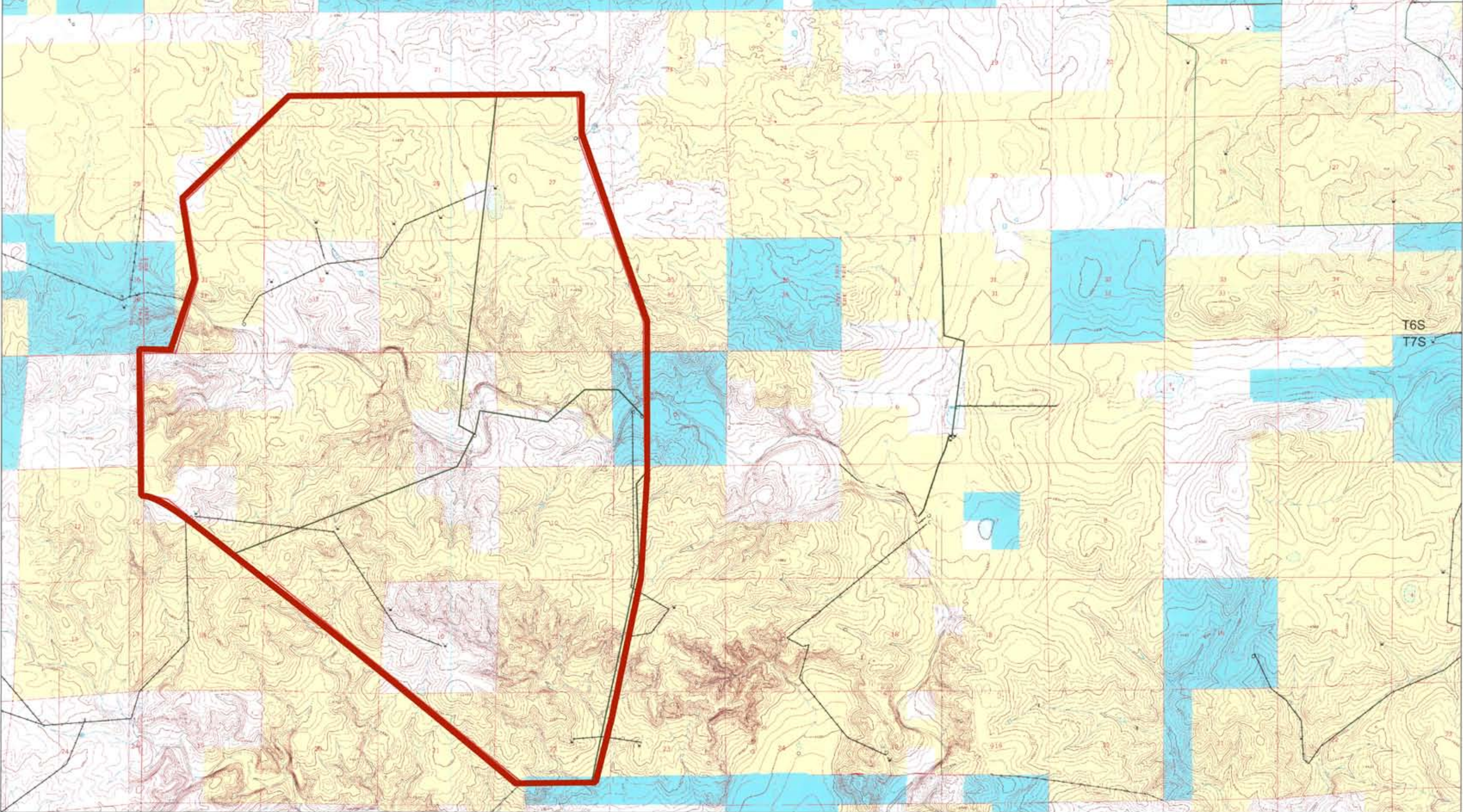


Ruidoso Downs Race Track & Casino
Fast horses and hot slots are the name of the game at Ruidoso Downs Race Track and Casino. The first race at Ruidoso Downs Race Track was run in 1947, then in 1999, a new era of racing in New Mexico began with the legalization of slot machine casinos at race tracks. The Billy the Kid Casino opened in May of 1999 and houses over 300 slot machines. The casino is open daily and, in 2006, paid out over \$100 million in winnings. Racing in the mountains takes place annually from Memorial Day to Labor Day, culminating with the \$2 million All American Futurity.



Bonita Lake, located near Ruidoso, New Mexico, is a couple hours away from the Gallo Creek Ranch. The world-famous Inn of the Mountain Gods in Ruidoso is pictured below.





R20E

R21E



- | | | | |
|--------------|--------------------|---------------|----------|
| Public Land | Allotment Boundary | Water Well | Windmill |
| State Land | Pasture Fence | Cattleguard | Corral |
| Private Land | Barbed Wire Fence | Retention Dam | Spring |
| | Water Pipeline | Storage Tank | Gate |
- Base Waters are in Red**





the Monument Canyon Ranch

\$2,800,000

offered exclusively by Ranchline, Inc.

12,340 total acres (MOL)
2,740 (MOL) deeded acres; 9,600 (MOL) BLM acres



Ranchline, Inc.
Paul Taylor, III
400 W. Second Roswell, NM 88201
1.866.323.3111 paul@ranchline.com

www.ranchline.com

