

# *Crooked Creek Ranch*



  
ranchline



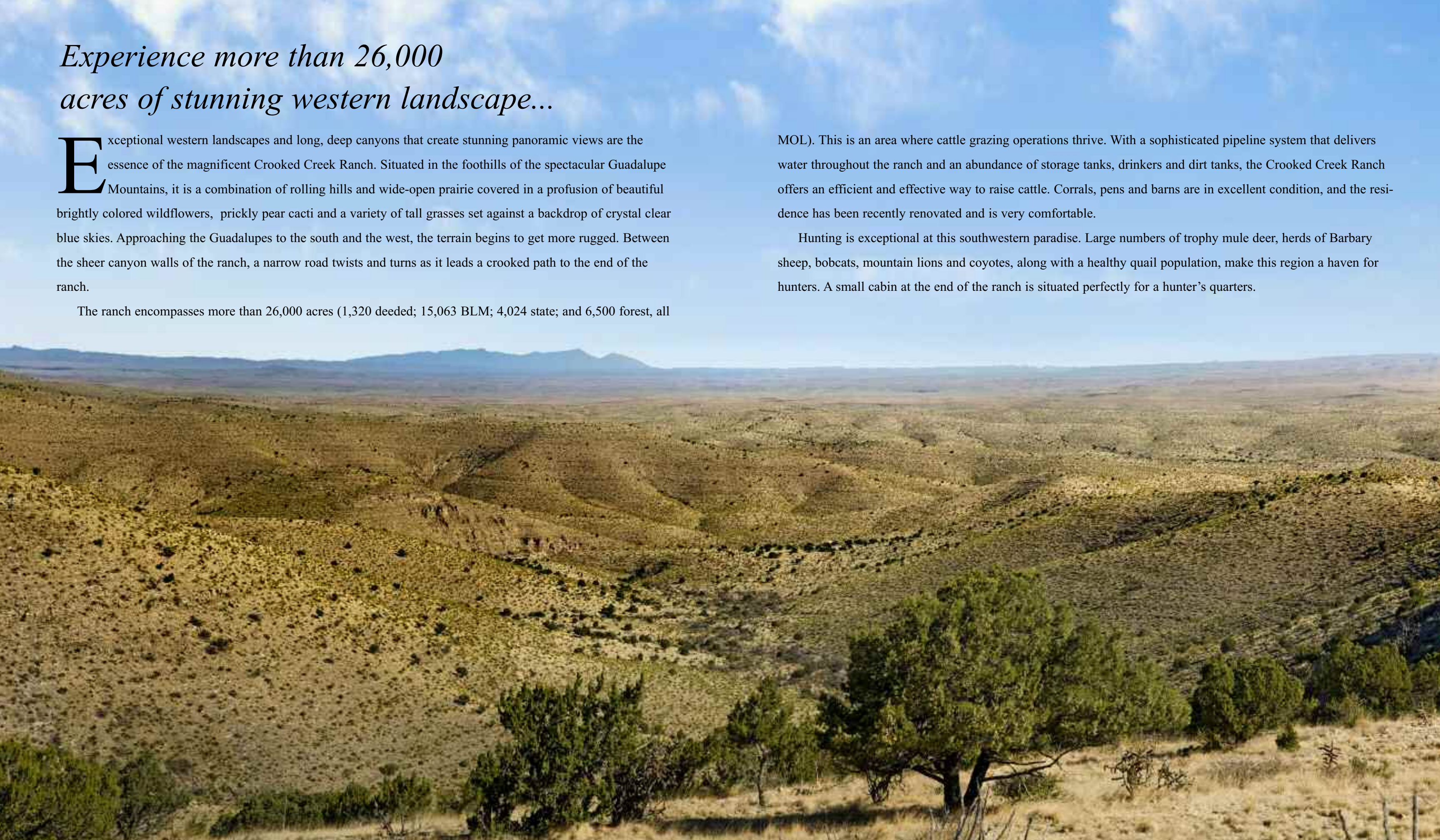
# *Experience more than 26,000 acres of stunning western landscape...*

Exceptional western landscapes and long, deep canyons that create stunning panoramic views are the essence of the magnificent Crooked Creek Ranch. Situated in the foothills of the spectacular Guadalupe Mountains, it is a combination of rolling hills and wide-open prairie covered in a profusion of beautiful brightly colored wildflowers, prickly pear cacti and a variety of tall grasses set against a backdrop of crystal clear blue skies. Approaching the Guadalupe to the south and the west, the terrain begins to get more rugged. Between the sheer canyon walls of the ranch, a narrow road twists and turns as it leads a crooked path to the end of the ranch.

The ranch encompasses more than 26,000 acres (1,320 deeded; 15,063 BLM; 4,024 state; and 6,500 forest, all

MOL). This is an area where cattle grazing operations thrive. With a sophisticated pipeline system that delivers water throughout the ranch and an abundance of storage tanks, drinkers and dirt tanks, the Crooked Creek Ranch offers an efficient and effective way to raise cattle. Corrals, pens and barns are in excellent condition, and the residence has been recently renovated and is very comfortable.

Hunting is exceptional at this southwestern paradise. Large numbers of trophy mule deer, herds of Barbary sheep, bobcats, mountain lions and coyotes, along with a healthy quail population, make this region a haven for hunters. A small cabin at the end of the ranch is situated perfectly for a hunter's quarters.





# *Crooked Creek Ranch*

Crooked Creek Ranch has a long and storied history. As part of the Sargent Seep Allotment, many individuals have been owners of this property. The allotment name came from a trapper named Sargent. At the turn of the century in 1900, Sargent was tracking a bear or lion along the edge of the Guadalupe Mountains. Small live springs are found in this area and Sargent decided to set traps in this area. As the story goes, one day he stepped into one of his traps and was unable to free himself. Eventually he died of dehydration and exposure. Today, you will find Sargent Canyon on the Crooked Creek Ranch

Throughout the 20th Century, the ranch changed hands on numerous occasions. The current owners, Mikel and Karrie Bullock, have continued the legacy of the ranch and have made many improvements to the ranch. The barns, corrals and pens are in excellent condition, and the residence has been renovated and is very comfortable.

This is a ranch that has always maintained successful cattle or sheep grazing operations, and it is in an area renowned for its wildlife and hunting.







---

# Canyons & Ravines

---

Steep canyon walls, ravines that are well worn by running water which may flow heavily during monsoon season in late summer months, and a landscape of green and yellow hues are what make up much of this ranch's southwest quadrant.

Pictured at the top of the opposite page is Outlaw Canyon. In the lower photo, Hell's Half-Acre offers spectacular views from the top to those who are brave enough to challenge the rough terrain.









# Ranch Headquarters



Pens, corrals, barns, and the ranch residence have all been very well maintained and have seen many improvements over recent years. The ranch residence is a block home of over 2,000 square feet that has been nicely maintained and is very comfortable.

The barn, pictured to the left is spacious and sturdy. The headquarters also offers an office, which is pictured on the opposite page.









The 4-bedroom, 2-bath home has been well maintained is a welcome sight after a day on the ranch.





# *The Roping Arena*

**Calf roping** – Also known as tie-down roping, calf-roping is a rodeo event that features a calf and a rider mounted on a horse. The goal of this timed event is for the rider to catch the calf by throwing a loop of rope from a lariat around its neck, dismount the horse, run to the calf and restrain it by tying three legs together in as short a time as possible. The event derives from the work of actual working cowboys, which sometimes required catching and restraining calves for branding or medical treatment. Top professional calf ropers will rope and tie a calf in 7 seconds. The world record is just over 6 seconds.

---

The ranch's current owner and his family often compete in local rodeo events. In order to give his wife and children a place to practice, he constructed this arena. His work has paid off; his children often place high in numerous events and his wife is a successful barrel racer.





---

# Cattle & Water

---

As a cattle ranch, Crooked Creek is rated for 586 cows and 10 horses. Currently, the ranch is running 341 cattle.

Water is always an issue at ranches in southeastern New Mexico, but at Crooked Creek Ranch, an extensive pipeline runs throughout the ranch to insure water is always available. The majority of the pipeline in this system is new.

There are 32 storage tanks ranging from 1,500 to 60,000 gallons.

Six dirt tanks further insure water availability.

A live spring (pictured below) runs year round on the west end of the ranch. Water from the spring is piped to storage tanks.







This barn is located away from the headquarters down one of the canyons and provides a secure place for equipment or supplies. There is also a nice set of corrals.







# Windmill

Crooked Creek's windmill on the west side of the ranch pumps 11 gallons a minute with a submersible pump.

Water from this site is piped to various locations throughout the ranch.





# WILDLIFE

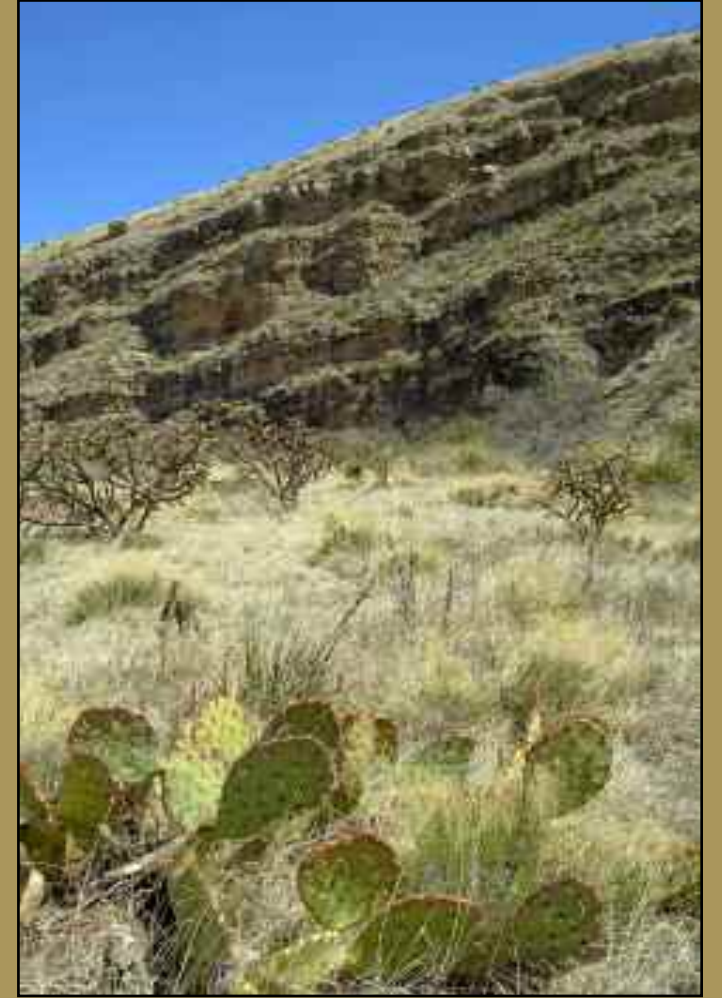
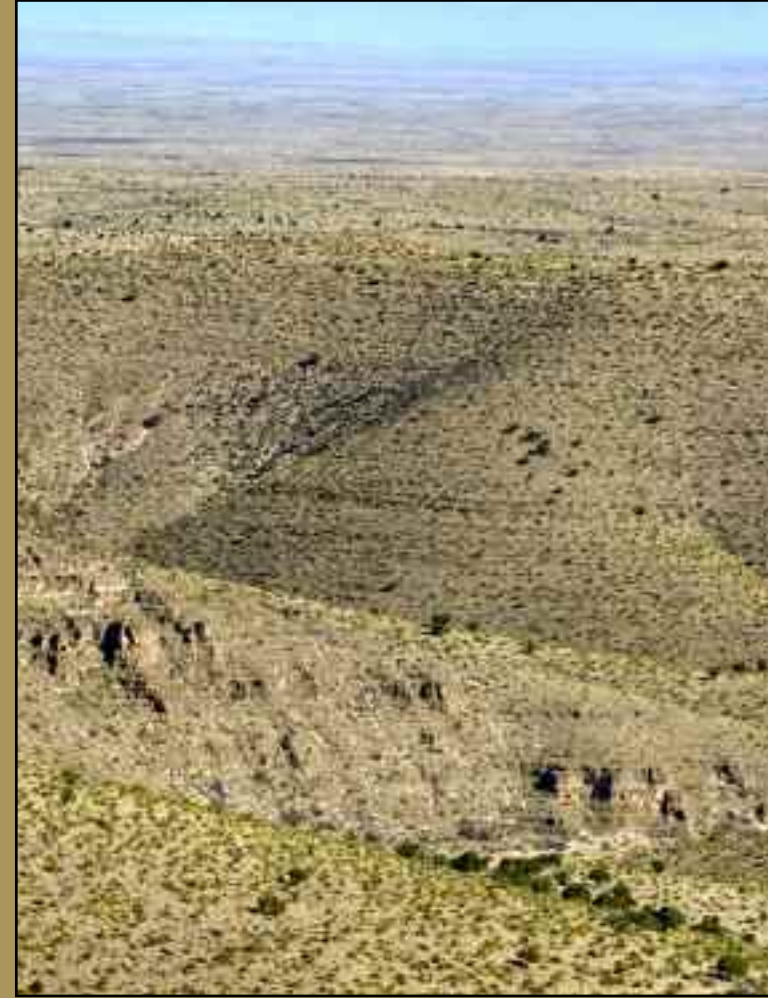
on the Crooked  
Creek Ranch



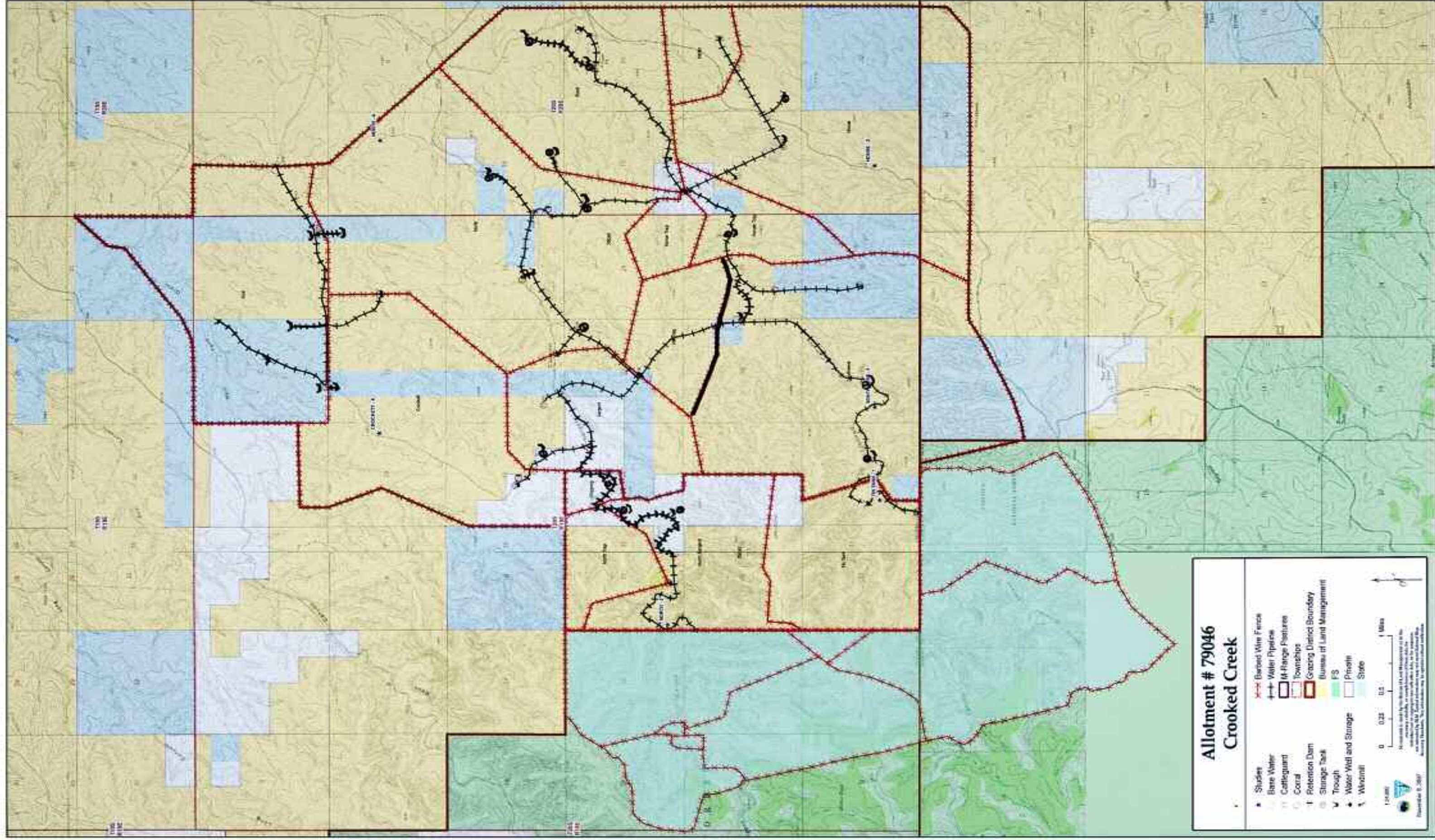




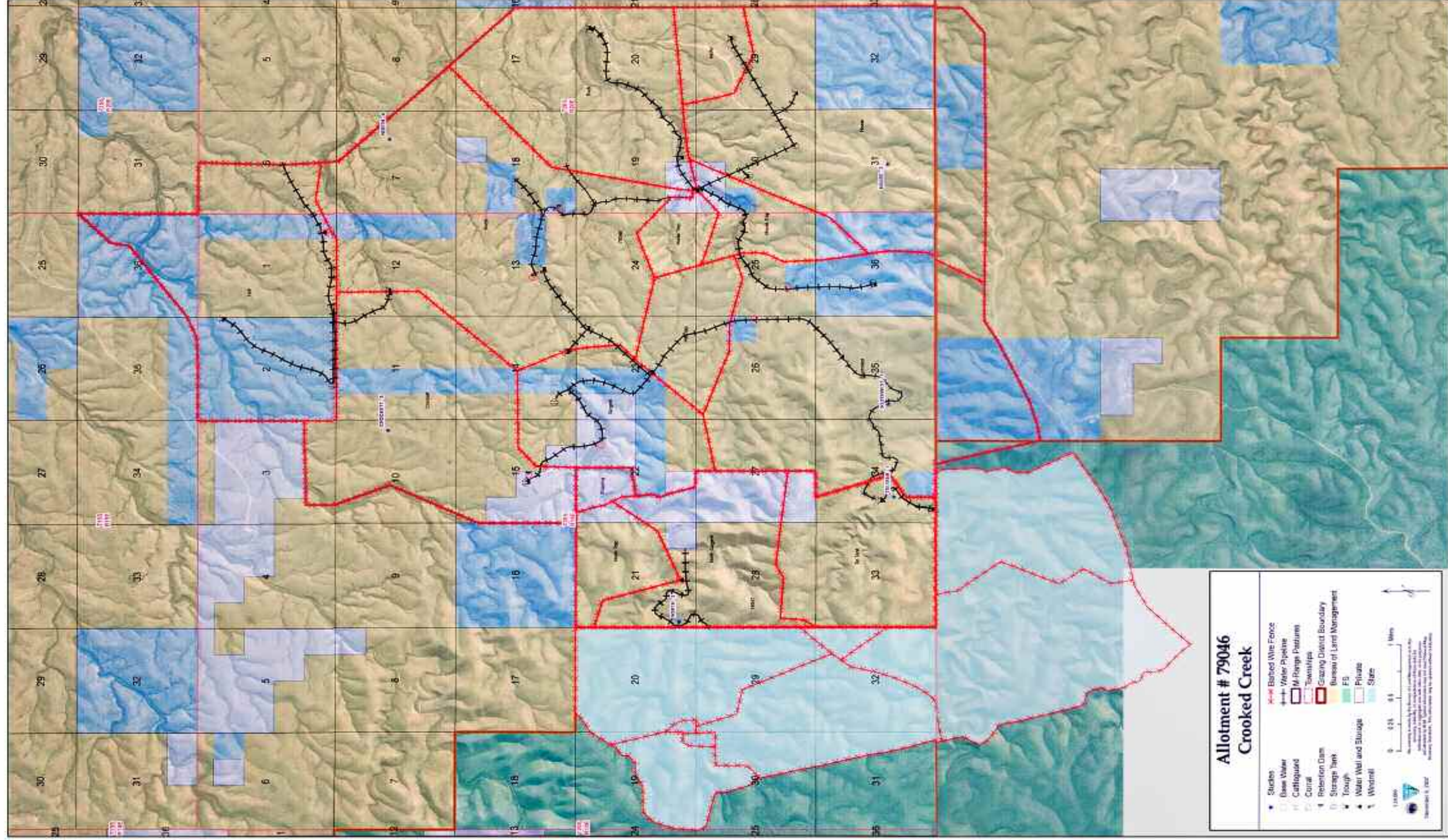
The cabin on the west end of the ranch has the potential of being a nice hunter's quarters. Live springs are right up the hill.











## Allotment # 79046 Crooked Creek

- Stakes
- Base Water
- Culloguand
- Corral
- Retention Dam
- Storage Tank
- Trough
- Water Well and Storage
- Windmill
- Barbed Wire Fence
- Water Pipeline
- BLM Ranges Pastures
- Townships
- Grazing District Boundary
- Bureau of Land Management
- FB
- Private
- State



1:10,000

This map was prepared by the Bureau of Land Management as a result of a study conducted by the Bureau of Land Management and the National Forest Service. The information on this map is for informational purposes only and should not be used for any other purpose.



# Crooked Creek Ranch

  
ranchline

## Nearby Attractions

### Cloudcroft

Only a couple of hours west of Crooked Creek Ranch is the mountain resort community of Cloudcroft, located nearly 9,000 feet above sea level and famous for both winter and summer activities, including skiing, snowmobiling, hiking, camping and fishing. Situated in the heart of the Sacramento Mountains in the Lincoln National Forrest, Cloudcroft is also known for The Lodge, a well-known resort seasoned by a rich and cultured past. The Lodge Resort beckons with alluring promises of intrigue. But more than that, this magnificent Cloudcroft, New Mexico, hotel and resort possesses a quality unlike any other retreat. From the turn-of-the-century fire that destroyed the original structure to its ghostly inhabitants to its storied past, the resort offers a haunting presence that can be felt to your very core. Inside its halls, magic moments live again and again - making this a place that never completely leaves your heart. Towering 9,000 feet above sea level, this prestigious New Mexico resort offers leisure and business travelers an entrancing location.

### Ruidoso

Forty-five minutes from Cloudcroft and an hour west of Roswell on Hwy 70, the town of Ruidoso offers many fun activities and educational opportunities. At an elevation of 7,000 feet, Ruidoso is a winter mecca for skiers and snowboarders. Summer finds golf, horse racing, hiking and biking. In the Lincoln National Forest, fishing, camping and RVing are popular activities in this bustling town filled with art galleries and local artisans shops.

Nearby, at the Inn of the Mountain Gods Resort, this newly renovated 5-star hotel offers a championship golf course and the popular Casino Apache with blackjack, craps, roulette, video terminals and slots.

### El Paso/Albuquerque/Santa Fe/Roswell/Artesia

Three hours southwest, just over the New Mexico border into Texas, metropolitan El Paso beckons with its international airport, shopping, entertainment and dining. As a cultural center, El Paso is a gateway into Mexico.

To the north lies Roswell, a city of 50,000. Albuquerque and Santa Fe are two of the economic and cultural centers in all the Southwest. Albuquerque and its 700,000 residents offers all you could want in shopping and entertainment, while Santa Fe draws visitors worldwide to its world-class art galleries. Artesia, a cozy little town of 20,000, offers restaurants, shopping, entertainment and more. From the ranch, it can be reached in 45 minutes.



*The Lodge in Cloudcroft is not far from Crooked Creek. This prestigious resort is well-known for its magical atmosphere.*



*Ruidoso is famous for its natural beauty, outdoor activities. Pictured is Bonita Lake, a recreational area well-known for fishing.*



*El Paso – just a few hours away – has plenty to offer including its international airport, shopping and cultural attractions.*



# Roswell

The city of Roswell and Chaves County have been important historical sites throughout the history of human habitation in North America. Roswell, situated at the confluence of three rivers – the Spring, the Hondo, the Pecos – was established in 1870 by Van Smith, although the first historically documented settlement (1867) in the area was a settlement of crude adobe huts at “Rio Hondo,” the present day neighborhood of Chihuahuita. The Roswell and Chaves County area was contained within the original homeland of the Mescalero Apaches and overlapped the hunting grounds of the Comanche’s and became the campsite on the Goodnight-Loving Trail, which opened in 1866. The trail brought the ranching industry to the area, which flourishes to the present day.

Visitors to the city will find a plethora of cultural activities. For example, museum and art lovers of every age and interest can explore five outstanding museums: the Anderson Museum of Contemporary Art, featuring a wide ranging collection of modern art; the Roswell Museum and Art Center, with its collection of paintings by Peter Hurd, Henriette Wyeth, Georgia O’Keefe, as well as the fabulous Rogers Aston Indian Gallery; the Historical Center for Southwest New Mexico, located in the James Phelps White stately home and filled with antiques, artifacts, and a changing gallery of exhibits; the General Douglas L. McBride Museum, with its military armament displays; and the International UFO Museum, featuring UFO phenomenon exhibits and The Alien Caffeine Espresso Bar.

There’s much more to do in this All-America City. If your cup of tea is stargazing and planet exploration, the Robert H. Goddard Planetarium is an exciting choice. Bird watchers and wildlife aficionados will relish trips to Bitter Lake Wildlife Refuge with its designated fishing and hunting areas and flocks of migratory fowl. The Spring River Park and Zoo boasts animal exhibits, paved bicycle paths, a children’s fishing lake, a carousel, and a miniature train ride. Golfers will enjoy two of the finest courses in Southeast New Mexico: Cahoon Park, an 18-hole golf course open to the public and New Mexico Military Institute’s 18-hole course also open to the public.



*A view down Main Street.*



*Downtown Roswell which houses the famous UFO Museum.*



*The Chaves County Courthouse.*



*Wells Fargo Bank Building in downtown Roswell.*



**Crooked Creek Ranch**  
**26,907 acres (MOL)**  
**\$2,600,000**

Offered exclusively by Ranchline

Paul Taylor, III

Toll-free 1-866-323-3111 or (505) 420-5585

[www.ranchline.com](http://www.ranchline.com) ♦ [paul@ranchline.com](mailto:paul@ranchline.com)

  
**ranchline**





## *Reaching New Heights in Ranch Sales*

Ranchline is an experienced team focusing on premier ranch properties across the West. Our proven marketing strategy and excellent service keeps us in high demand. We represent the finest ranch real estate and consult with buyers in their property acquisitions, nationwide.

## *Sell Your Ranch with Ranchline*

Ranchline is leading the way in accelerated and conventional marketing of premier properties. When it's time to put your ranch on the market, nobody gets results better than Ranchline.

*Selling premier  
properties across the West...*



**[www.ranchline.com](http://www.ranchline.com)**

**Toll-free: 1-866-323-3111**

Mobile (505) 420-5585 ♦ Office (505) 622-1490

400 West 2nd, Roswell, NM 88201 ♦ e-mail: [paul@ranchline.com](mailto:paul@ranchline.com) ♦ [www.ranchline.com](http://www.ranchline.com)