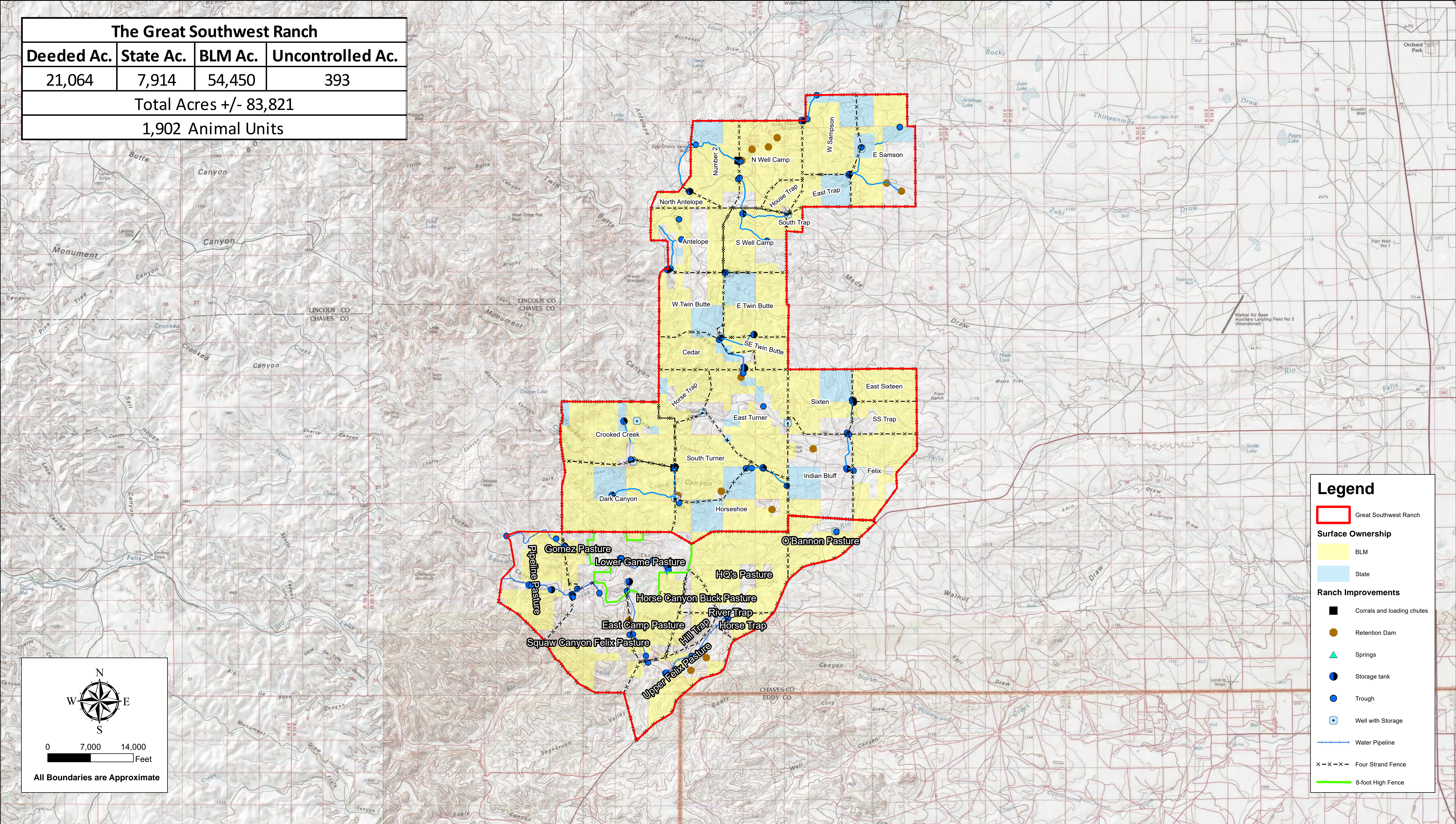


| The Great Southwest Ranch |           |         |                  |
|---------------------------|-----------|---------|------------------|
| Deeded Ac.                | State Ac. | BLM Ac. | Uncontrolled Ac. |
| 21,064                    | 7,914     | 54,450  | 393              |
| Total Acres +/- 83,821    |           |         |                  |
| 1,902 Animal Units        |           |         |                  |



Ranchline represents some of the finest ranch and recreational properties in the country. We are even privileged to manage the operations of a select few. All of the Ranchline companies are singularly guided by a shared belief that excellence, accountability, independence and passion are what matter most. The Western attitude of old is still what we practice today: you must always... "ride for the brand"

Map Prepared: 5/26/2023

# The Great Southwest Ranch

## Chaves County, New Mexico