

Coronado Farm

Roswell, New Mexico ♦ 18.2 acres with Sr. Water Rights ♦ \$1,150,000



Luxury home and 18.2 great acres highlight this spectacular southeastern New Mexico property

With the first glimpse of Coronado Farm, you will be enchanted.

Enter through the security gate and you will find yourself standing before a luxurious southwestern home surrounded by elegantly landscaped grounds and tall shade trees.

A spacious, southwestern-style home, Coronado Farm is located on the northern fringe of Roswell, New Mexico. The Ranch is a spectacular combination of a luxurious 3,600 square foot home, 18.2 acres of farmland with 17.1 acres of senior water rights and an income producing pecan orchard.

A custom interior floor plan and richly appointed rooms mean both comfort and luxury can be yours.

At Coronado Farm, you can experience rural living without living miles away from the city. Located in the countryside just a couple of miles away from the heart of Roswell, this home offers a multitude of opportunities.



720 E. College Blvd. Roswell, NM 88201
Mobile (575) 420-5585 Office (575) 622-1490
e-mail: paul@ranchline.com ♦ www.ranchline.com

Coronado Farm



The attractive iron security gate provides peace of mind. Operated by remote control, this gate is an appealing feature to a home that is filled with many extra features. Once inside, the spacious living area beckons, complete with a fireplace offering a cozy place to curl up on chilly winter nights.



720 E. College Blvd. Roswell, NM 88201
Mobile (575) 420-5585 Office (575) 622-1490
e-mail: paul@ranchline.com ♦ www.ranchline.com

Coronado Farm



Beyond the living room, you will discover a large kitchen with a spacious island, tile floors, marble countertops and lots of cabinet space. A bright breakfast area is a great place to start the day, or it's just right for those quick meals or late-night snacks.

Upstairs, a master bedroom suite offers spaciousness and style. Complete with a fireplace and a master bath that will take your breath away, this suite is a great place to escape the pressures of the day.



720 E. College Blvd. Roswell, NM 88201
Mobile (575) 420-5585 Office (575) 622-1490
e-mail: paul@ranchline.com ♦ www.ranchline.com

Coronado Farm

A sun porch that begs you to relax, impeccably landscaped grounds and acre after acre of irrigated fields that surround this magnificent retreat are a few of the amenities that make this residence stand apart. Whether you are entertaining, hosting family activities or working the orchard and fields, this is a place that always feels like home.



720 E. College Blvd. Roswell, NM 88201
Mobile (575) 420-5585 Office (575) 622-1490
e-mail: paul@ranchline.com ♦ www.ranchline.com

Coronado Farm



The income-producing pecan orchard consists of over 99 trees and is located adjacent to the Coronado Farm home. Well-maintained and cultivated, this grove of pecan trees is sure to produce for years to come.

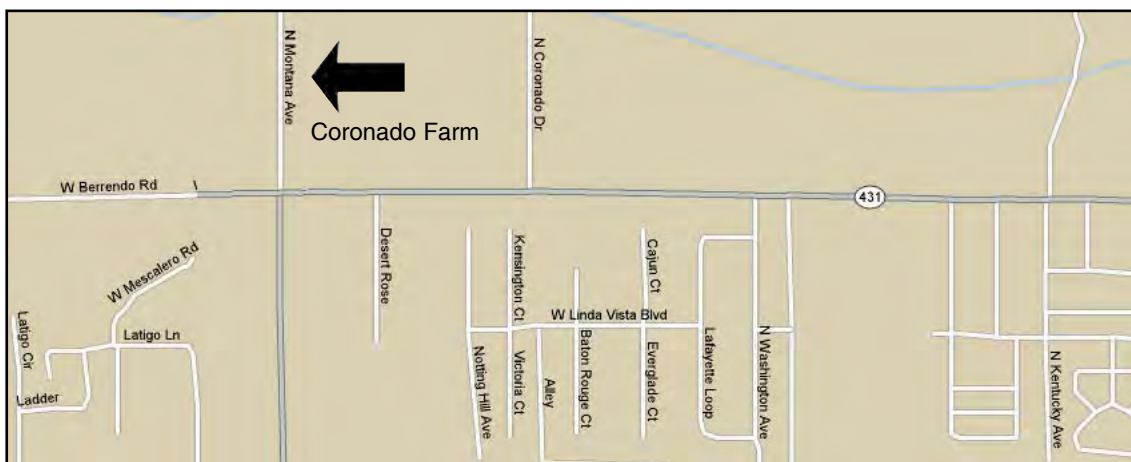


The barn is in excellent condition and provides a place to park equipment and store bales of hay or other crops.



720 E. College Blvd. Roswell, NM 88201
Mobile (575) 420-5585 Office (575) 622-1490
e-mail: paul@ranchline.com ♦ www.ranchline.com

Coronado Farm

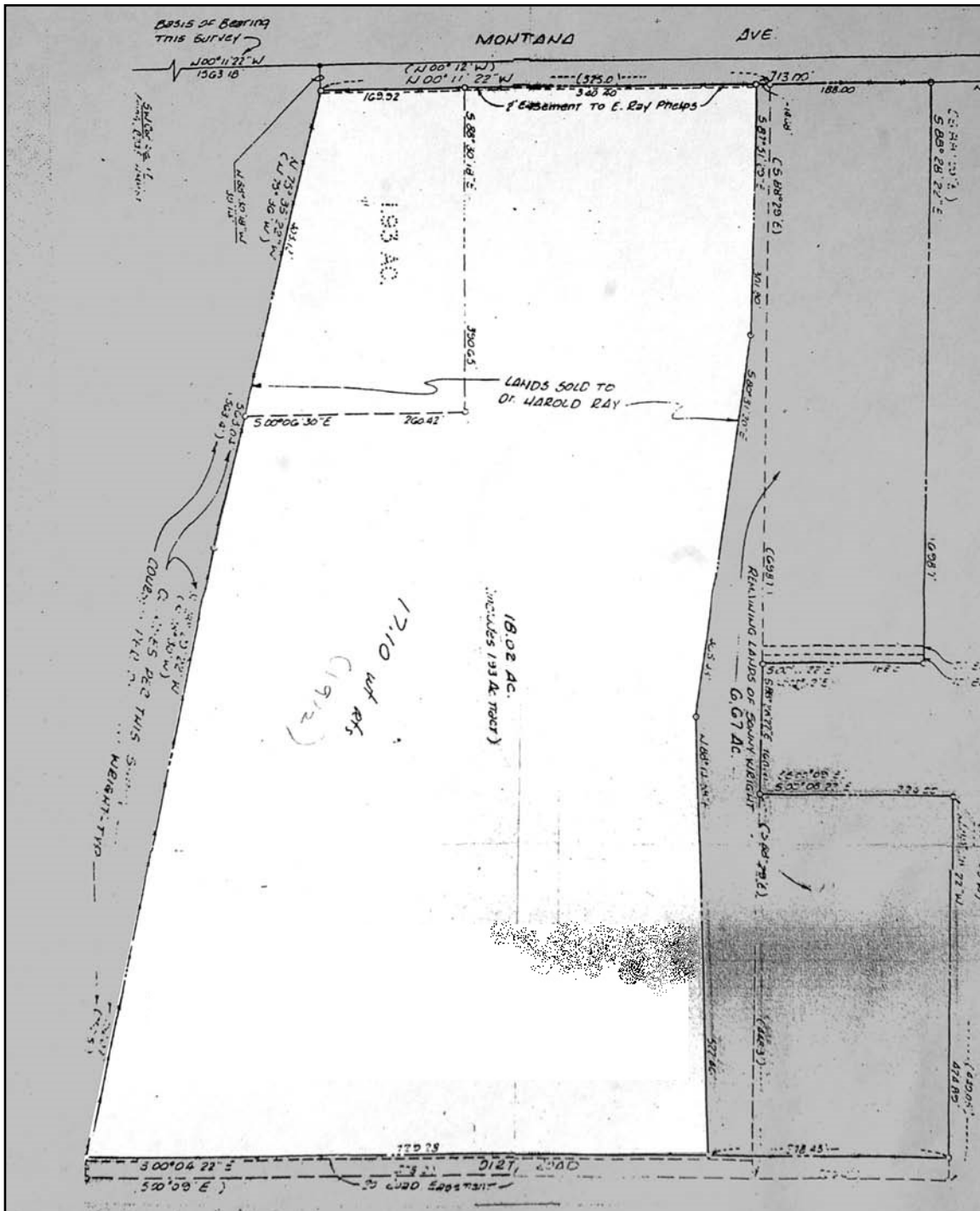


Located on the northern edge of Roswell, NM, the Coronado Farm offers a great place to live in a quiet area that is only a few miles from the center of town. Opportunities such as this are rare, and this property will not last long in the progressive and growing Roswell market. Call for your tour of the Coronado Farm today!



720 E. College Blvd. Roswell, NM 88201
Mobile (575) 420-5585 Office (575) 622-1490
e-mail: paul@ranchline.com ♦ www.ranchline.com

Coronado Farm



720 E. College Blvd. Roswell, NM 88201
Mobile (575) 420-5585 Office (575) 622-1490
e-mail: paul@ranchline.com ♦ www.ranchline.com