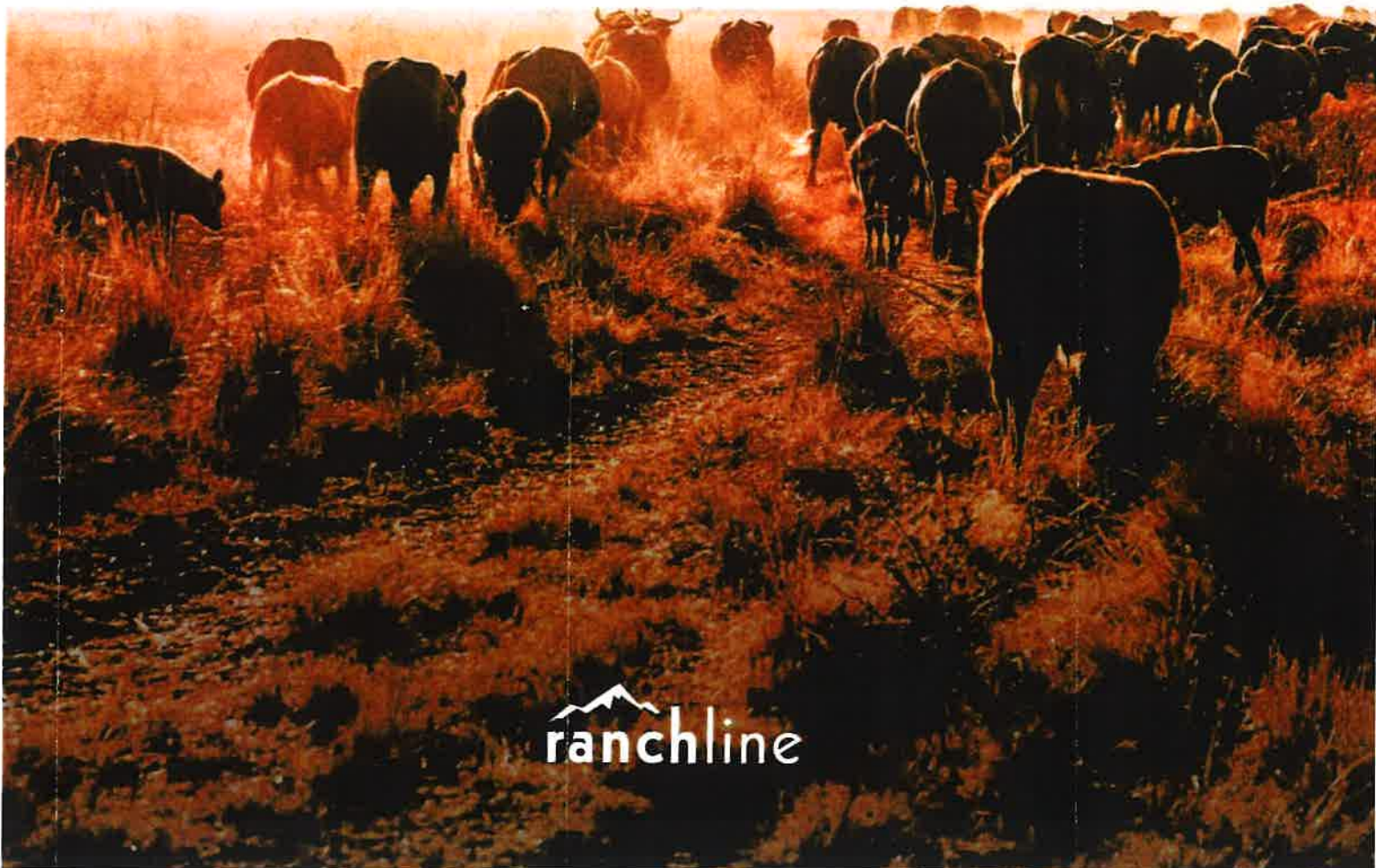


NEW  MEXICO

GREAT SOUTHWEST *Agro*

AG RANCH OPERATION



 ranchline



The Ranch Units

Dark Canyon Ranch is broken into 3 sections, a grow yard, and two ranch units and grazing allotments for maximum efficiency and ease. Each unit has its own AU carrying capacity, as well as its own set number of pastures and traps. The lease terms are generally 5-years for NM state lease and 10-year agreements for BLM leased land. The lessee has the first right of renewal when the lease terms expire.

ZUBI DRAW RANCH UNIT

4,743 Deeded Acres
8,319 State Lease Land
5,313 BLM Lease Acres
367 AUs
8 pastures
3 traps
\$ 5,505,000.

INDIAN BLUFF RANCH UNIT

9,469 Deeded Acres
8,205 State Lease Acres
41,417 BLM Lease Acres
1,298 AUs
18 pastures
5 traps
\$ 19,470,000.

ZUBI FARM & GROW YARD

1,877.45 Deeded Acres
101.5 Water Rights Acres
\$ 5,500,000.

TOTAL ACRES 79,344.36

\$ 30,475,000.

The Tract Breakdown

In its entirety, Great Southwest AGRO encompasses 6 premier farm and ranch tracts totaling 83,367 acres +/- in Chaves County, making it an extremely rare opportunity to own and operate a full-spectrum, highly productive agricultural complex.

TRACT 1 MACHO SPRINGS FARM

ACREAGE TOTAL: 556.42 **\$4,975,000**
 Water Rights Acreage 232.5
 Deeded Grassland 323.92

TRACT 2 LA FARM

ACREAGE TOTAL: 258.803 **\$3,200,000**
 Water Rights Acreage 210.7
 Deeded Grassland 81.03
 State Lease Land 40.0

TRACT 3 MACHO FARM **SOLD**

ACREAGE TOTAL: 1,532.89
 Water Rights Acreage 228.95
 Deeded Grassland 306.25
 State Lease Land 997.69

TRACT 4 MACHO NORTH FARM **SOLD**

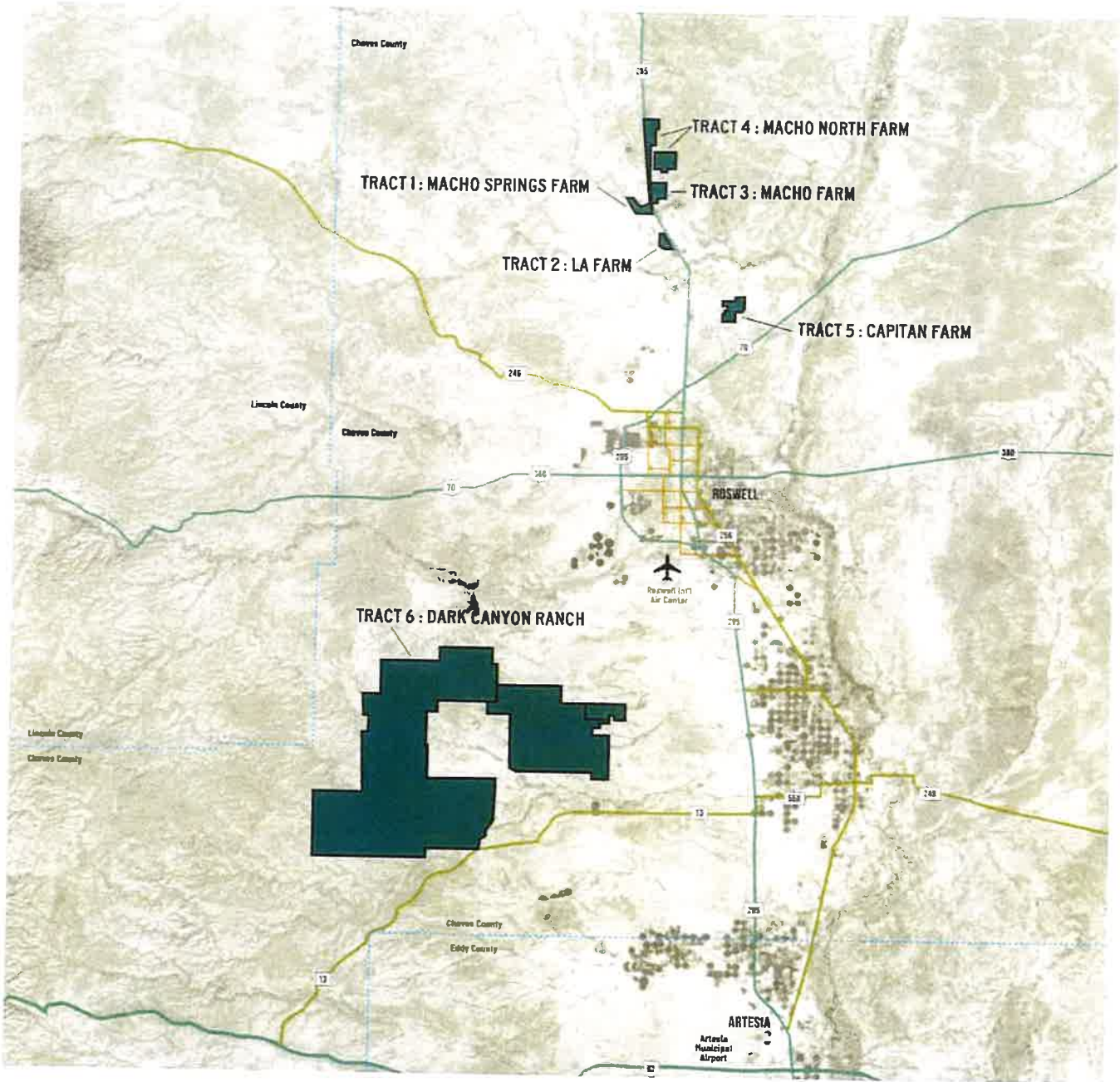
ACREAGE TOTAL: 885.57
 Water Rights Acreage 191.25
 State Lease Land 694.32

TRACT 5 CAPITAN FARM

ACREAGE TOTAL: 789.4 **\$6,350,000**
 Water Rights Acreage 423.5
 Deeded Grassland 365.9

TRACT 6 DARK CANYON RANCH

ACREAGE TOTAL: 79,344.36 **\$30,475,000**
 Water Rights Acreage 101.5
 Deeded Grassland 15,988.0
 State Lease Land 16,524.86
 BLM Lease Land 46,730.0



The tracts are conveniently positioned around the outskirts of Roswell, from Dark Canyon Ranch & Farm sections at the southern end of Chaves County, to the farm tracts situated to the north and northeast side of Roswell and northern Chaves County.