

TRACT 3:

MACHO FARM

ACREAGE TOTAL: 1,532.89
228.95 WATER RIGHTS ACREAGE
306.25 DEEDED GRASSLAND
997.69 STATE LEASE LAND

Prime tillable farmland plus native grassland, expanded by state lease land, offers high productivity, beauty, and boundless recreation.

Use Summary

32

With 232.8 irrigated acres, this versatile combination farm has been maintained for optimal crop production and grazing, plus hunting opportunities, too. There's also plenty of room for horses or livestock.

Macho Farm is a major contributor to both the agricultural production and investment potentials of the tracts, and offers the opportunity to enjoy an unparalleled blend of farming, grazing, hunting, and recreation in a spacious, secluded rural setting.

Improvements

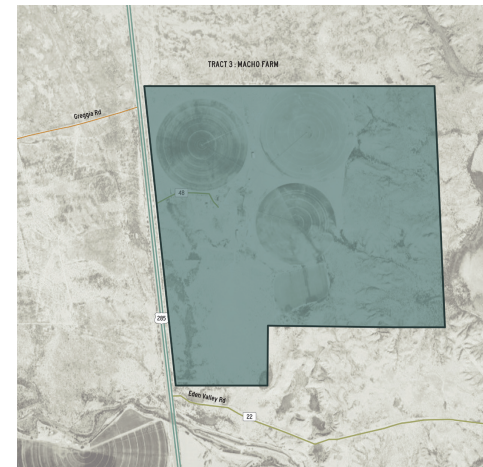
The property has its share of usable building improvements including:

- » A versatile residence
- » Multi-use barns
- » Storage buildings and structures

The buildings are primarily used for farm equipment and the day-to-day farm and grazing operations, with the room and versatility to be used for recreational gear and lodging as well.

IRRIGATION & WATER SYSTEMS

WELLS & PUMPS		IRRIGATION IMPROVEMENTS	
No. Wells / GPM	1/900 gpm (4.27 gpm/irrig acre)	No. Pivots	3
Avg. GPM/Well	900	Towers	18
Pumping Equipment	1 - Electric VHS turbine pump	Length Total	2,955



Location & Access

33

Stretching across over 530 scenic country acres, Macho Farm is located approximately 14 miles north of Roswell, NM. The farm consists of 535.2 acres in Section 31, Township 7 South, Range 24 East, and Sections 1 and 6, Township 8 South, Range 24 East in Chaves County.

Located along the east side of U.S. Highway 285 at Otero Road, the well-established roads ensure easy access year round.